

Product datasheet for **TA314807**

DcR3 (TNFRSF6B) Rabbit Polyclonal Antibody

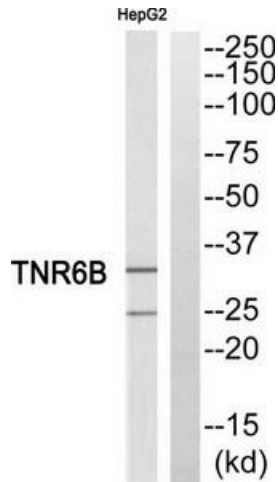
Product data:

Product Type:	Primary Antibodies
Applications:	IF, IHC, WB
Recommended Dilution:	WB: 1:500~1:3000, IHC: 1:50~1:100, IF: 1:100~1:500, ELISA: 1:1000
Reactivity:	Human
Host:	Rabbit
Isotype:	IgG
Clonality:	Polyclonal
Immunogen:	The antiserum was produced against synthesized peptide derived from C-terminal of human TNFRSF6B.
Formulation:	Phosphate buffered saline (without Mg ²⁺ and Ca ²⁺), pH 7.4, 150mM NaCl, 0.02% sodium azide and 50% glycerol.
Concentration:	lot specific
Purification:	The antibody was affinity-purified from rabbit antiserum by affinity-chromatography using epitope-specific immunogen.
Conjugation:	Unconjugated
Storage:	Store at -20°C as received.
Stability:	Stable for 12 months from date of receipt.
Gene Name:	tumor necrosis factor receptor superfamily member 6b
Database Link:	NP_003814 Entrez Gene 8771 Human O95407
Synonyms:	DCR3; DJ583P15.1.1; M68; M68E; TR6
Note:	TNFRSF6B antibody detects endogenous levels of total TNFRSF6B protein.
Protein Families:	Secreted Protein
Protein Pathways:	Cytokine-cytokine receptor interaction

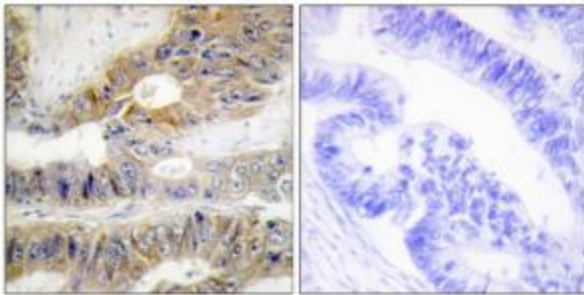


[View online »](#)

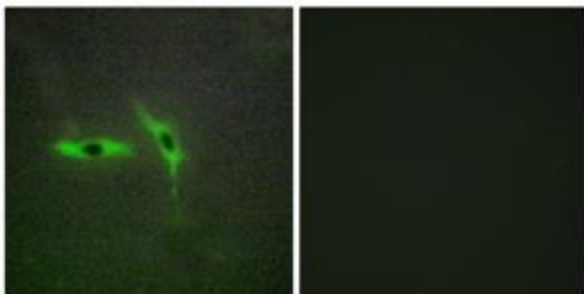
Product images:



Western blot analysis of extracts from HepG2 cells, using TNFRSF6B antibody. The lane on the right is treated with the synthesized peptide.



Immunohistochemistry analysis of paraffin-embedded human colon carcinoma tissue using TNFRSF6B antibody. The picture on the right is treated with the synthesized peptide.



Immunofluorescence analysis of HepG2 cells, using TNFRSF6B antibody. The picture on the right is treated with the synthesized peptide.