

Product datasheet for **TA314804**

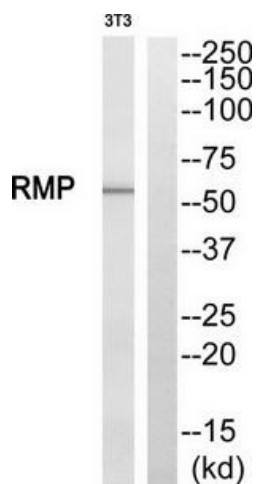
C19orf2 (URI1) Rabbit Polyclonal Antibody

Product data:

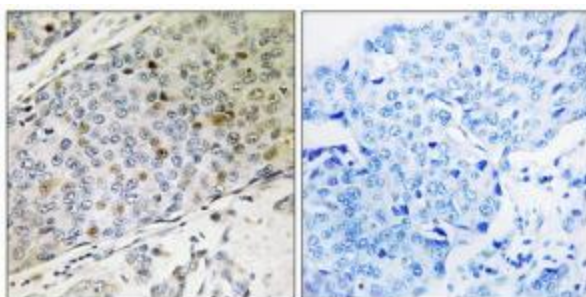
Product Type:	Primary Antibodies
Applications:	IHC, WB
Recommended Dilution:	WB: 1:500~1:3000, IHC: 1:50~1:100, ELISA: 1:40000
Reactivity:	Human
Host:	Rabbit
Isotype:	IgG
Clonality:	Polyclonal
Immunogen:	The antiserum was produced against synthesized peptide derived from C-terminal of human RMP.
Formulation:	Phosphate buffered saline (without Mg ²⁺ and Ca ²⁺), pH 7.4, 150mM NaCl, 0.02% sodium azide and 50% glycerol.
Purification:	The antibody was affinity-purified from rabbit antiserum by affinity-chromatography using epitope-specific immunogen.
Conjugation:	Unconjugated
Storage:	Store at -20°C as received.
Stability:	Stable for 12 months from date of receipt.
Gene Name:	URI1 prefoldin-like chaperone
Database Link:	NP_604431 Entrez Gene 8725 Human O94763
Synonyms:	FLJ10575; NNX3; RMP; URI
Note:	RMP antibody detects endogenous levels of total RMP protein.
Protein Families:	Transcription Factors



[View online »](#)

Product images:

Western blot analysis of extracts from NIH/3T3 cells, using RMP antibody. The lane on the right is treated with the synthesized peptide.



Immunohistochemistry analysis of paraffin-embedded human breast carcinoma tissue, using RMP antibody. The picture on the right is treated with the synthesized peptide.