

Product datasheet for **TA314800S**

MRP3 (ABCC3) Rabbit Polyclonal Antibody

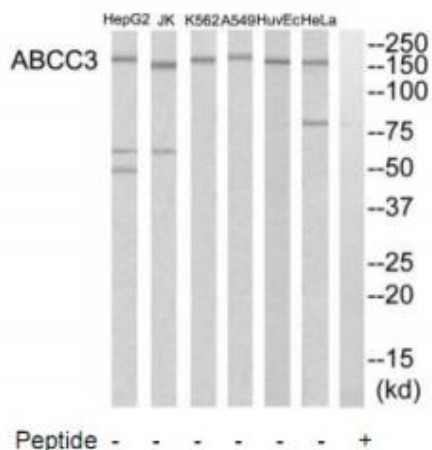
Product data:

Product Type:	Primary Antibodies
Applications:	WB
Recommended Dilution:	WB: 1:500~1:3000, ELISA: 1:5000
Reactivity:	Human
Host:	Rabbit
Isotype:	IgG
Clonality:	Polyclonal
Immunogen:	The antiserum was produced against synthesized peptide derived from internal of human ABCC3.
Formulation:	Phosphate buffered saline (without Mg ²⁺ and Ca ²⁺), pH 7.4, 150mM NaCl, 0.02% sodium azide and 50% glycerol.
Concentration:	lot specific
Purification:	The antibody was affinity-purified from rabbit antiserum by affinity-chromatography using epitope-specific immunogen.
Conjugation:	Unconjugated
Storage:	Store at -20°C as received.
Stability:	Stable for 12 months from date of receipt.
Gene Name:	ATP binding cassette subfamily C member 3
Database Link:	NP_001137542 Entrez Gene 8714 Human O15438
Synonyms:	ABC31; cMOAT2; EST90757; MLP2; MOAT-D; MRP3
Note:	ABCC3 antibody detects endogenous levels of total ABCC3 protein.
Protein Families:	Druggable Genome, Transmembrane
Protein Pathways:	ABC transporters



[View online »](#)

Product images:



Western blot analysis of extracts from HeLa cells, A549 cells, Jurkat cells, HuvEc cells, K562 cells and HepG2 cells, using ABCC3 antibody. The lane on the right is treated with the synthesized peptide.

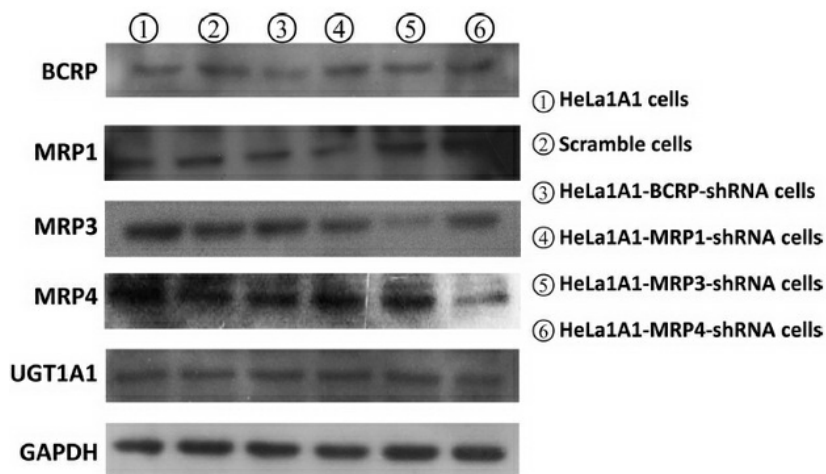


Figure from citation: Western blot analysis of human BCRP, MRP1, MRP3, MRP7 and UGT1A1 protein expression by using anti-ABCG2, anti-ABCC1, anti-ABCC3, anti-ABCC4 and anti-UGT1A1 antibody in various cell lines. [View Citation](#)

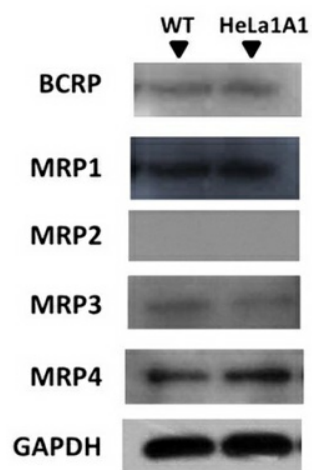


Figure from citation: Western blot analysis of protein expression of BCRP and four MRP family transporters by using anti-ABCG2, anti-ABCC1, anti-ABCC2, anti-ABCC3 and anti-ABCC4 antibody in HeLa and HeLa1A5 cells. [View Citation](#)