

Product datasheet for **TA314797**

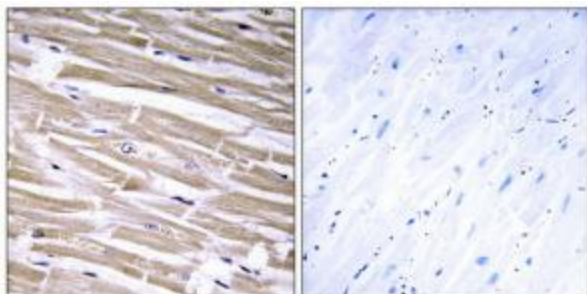
B3GALT2 Rabbit Polyclonal Antibody

Product data:

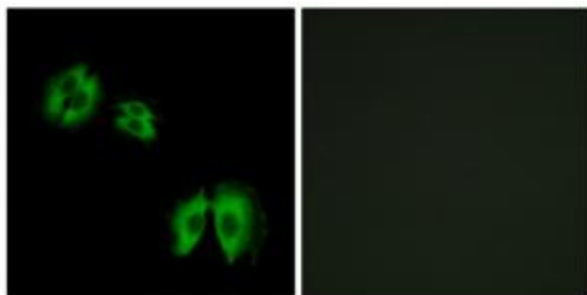
Product Type:	Primary Antibodies
Applications:	IF, IHC
Recommended Dilution:	IHC: 1:50~1:100, IF: 1:100~1:500, ELISA: 1:60000
Reactivity:	Human, Mouse
Host:	Rabbit
Isotype:	IgG
Clonality:	Polyclonal
Immunogen:	The antiserum was produced against synthesized peptide derived from internal of human B3GALT2.
Formulation:	Phosphate buffered saline (without Mg ²⁺ and Ca ²⁺), pH 7.4, 150mM NaCl, 0.02% sodium azide and 50% glycerol.
Concentration:	lot specific
Purification:	The antibody was affinity-purified from rabbit antiserum by affinity-chromatography using epitope-specific immunogen.
Conjugation:	Unconjugated
Storage:	Store at -20°C as received.
Stability:	Stable for 12 months from date of receipt.
Gene Name:	beta-1,3-galactosyltransferase 2
Database Link:	NP_003774 Entrez Gene 26878 Mouse Entrez Gene 8707 Human O43825
Synonyms:	beta3Gal-T2; BETA3GALT2; GLCT2
Note:	B3GALT2 antibody detects endogenous levels of total B3GALT2 protein.
Protein Families:	Transmembrane
Protein Pathways:	Glycosphingolipid biosynthesis - lacto and neolacto series, Metabolic pathways



[View online »](#)

Product images:

Immunohistochemistry analysis of paraffin-embedded human heart tissue using B3GALT2 antibody. The picture on the right is treated with the synthesized peptide.



Immunofluorescence analysis of A549 cells, using B3GALT2 antibody. The picture on the right is treated with the synthesized peptide.