

Product datasheet for **TA314795**

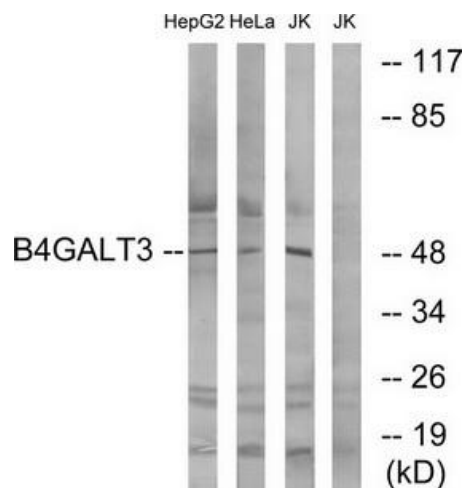
B4GALT3 Rabbit Polyclonal Antibody

Product data:

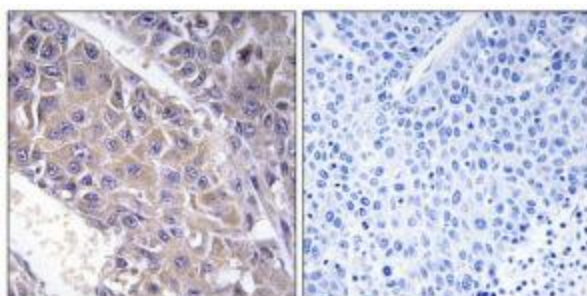
Product Type:	Primary Antibodies
Applications:	IHC, WB
Recommended Dilution:	WB: 1:500~1:3000, IHC: 1:50~1:100, ELISA: 1:40000
Reactivity:	Human, Mouse, Rat
Host:	Rabbit
Isotype:	IgG
Clonality:	Polyclonal
Immunogen:	The antiserum was produced against synthesized peptide derived from internal of human B4GALT3.
Formulation:	Phosphate buffered saline (without Mg ²⁺ and Ca ²⁺), pH 7.4, 150mM NaCl, 0.02% sodium azide and 50% glycerol.
Concentration:	lot specific
Purification:	The antibody was affinity-purified from rabbit antiserum by affinity-chromatography using epitope-specific immunogen.
Conjugation:	Unconjugated
Storage:	Store at -20°C as received.
Stability:	Stable for 12 months from date of receipt.
Gene Name:	beta-1,4-galactosyltransferase 3
Database Link:	NP_001186802 Entrez Gene 57370 Mouse Entrez Gene 494342 Rat Entrez Gene 8703 Human O60512
Synonyms:	beta4Gal-T3
Note:	B4GALT3 antibody detects endogenous levels of total B4GALT3 protein.
Protein Families:	Transmembrane
Protein Pathways:	Glycosphingolipid biosynthesis - lacto and neolacto series, Keratan sulfate biosynthesis, Metabolic pathways, N-Glycan biosynthesis



[View online »](#)

Product images:


Western blot analysis of extracts from HepG2 cells, HeLa cells and Jurkat cells, using B4GALT3 antibody. The lane on the right is treated with the synthesized peptide.



Immunohistochemistry analysis of paraffin-embedded human liver carcinoma tissue using B4GALT3 antibody. The picture on the right is treated with the synthesized peptide.