

## Product datasheet for **TA314793**

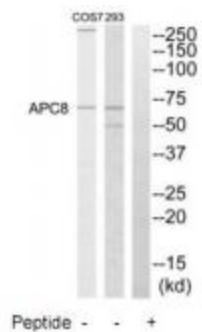
### CDC23 Rabbit Polyclonal Antibody

#### Product data:

Product Type:	Primary Antibodies
Applications:	WB
Recommended Dilution:	WB: 1:500~1:3000, ELISA: 1:20000
Reactivity:	Human, Mouse
Host:	Rabbit
Isotype:	IgG
Clonality:	Polyclonal
Immunogen:	The antiserum was produced against synthesized peptide derived from internal of human APC8.
Formulation:	Phosphate buffered saline (without Mg <sup>2+</sup> and Ca <sup>2+</sup> ), pH 7.4, 150mM NaCl, 0.02% sodium azide and 50% glycerol.
Concentration:	lot specific
Purification:	The antibody was affinity-purified from rabbit antiserum by affinity-chromatography using epitope-specific immunogen.
Conjugation:	Unconjugated
Storage:	Store at -20°C as received.
Stability:	Stable for 12 months from date of receipt.
Gene Name:	cell division cycle 23
Database Link:	<a href="#">NP_004652</a> <a href="#">Entrez Gene 52563 Mouse</a> <a href="#">Entrez Gene 8697 Human</a> <a href="#">Q9UJX2</a>
Synonyms:	ANAPC8; APC8; CUT23
Note:	APC8 antibody detects endogenous levels of total APC8 protein.
Protein Families:	Druggable Genome
Protein Pathways:	Cell cycle, Oocyte meiosis, Progesterone-mediated oocyte maturation, Ubiquitin mediated proteolysis



[View online »](#)

**Product images:**

Western blot analysis of extracts from 293 cells and COS-7 cells, using APC8 antibody. The lane on the right is treated with the synthesized peptide.