

Product datasheet for **TA314786**

EIF3F Rabbit Polyclonal Antibody

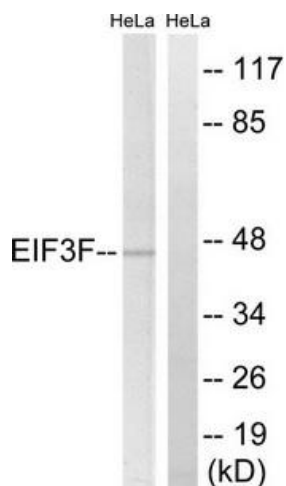
Product data:

Product Type:	Primary Antibodies
Applications:	IHC, WB
Recommended Dilution:	WB: 1:500~1:3000, IHC: 1:50~1:100, ELISA: 1:40000
Reactivity:	Human, Mouse
Host:	Rabbit
Isotype:	IgG
Clonality:	Polyclonal
Immunogen:	The antiserum was produced against synthesized peptide derived from internal of human EIF3F.
Formulation:	Phosphate buffered saline (without Mg ²⁺ and Ca ²⁺), pH 7.4, 150mM NaCl, 0.02% sodium azide and 50% glycerol.
Concentration:	lot specific
Purification:	The antibody was affinity-purified from rabbit antiserum by affinity-chromatography using epitope-specific immunogen.
Conjugation:	Unconjugated
Storage:	Store at -20°C as received.
Stability:	Stable for 12 months from date of receipt.
Gene Name:	eukaryotic translation initiation factor 3 subunit F
Database Link:	NP_003745 Entrez Gene 66085 Mouse Entrez Gene 8665 Human O00303
Synonyms:	eIF3-p47; EIF3S5
Note:	EIF3F antibody detects endogenous levels of total EIF3F protein.
Protein Families:	Druggable Genome

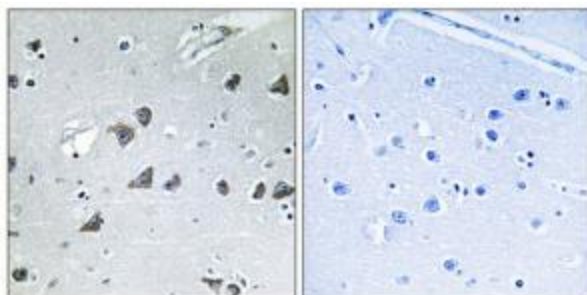


[View online »](#)

Product images:



Western blot analysis of extracts from Jurkat cells and COLO205 cells, using EIF3F antibody. The lane on the right is treated with the synthesized peptide.



Immunohistochemistry analysis of paraffin-embedded human brain tissue using EIF3F antibody. The picture on the right is treated with the synthesized peptide.