

## Product datasheet for **TA314775**

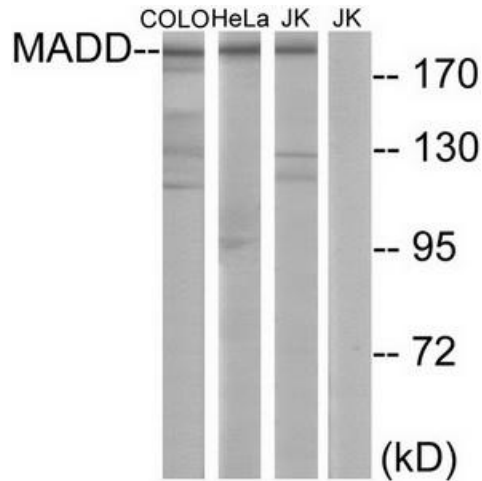
### **DENN (MADD) Rabbit Polyclonal Antibody**

#### **Product data:**

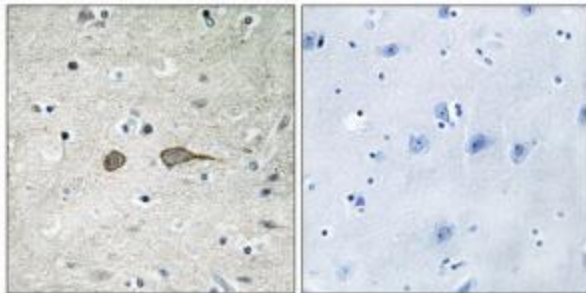
<b>Product Type:</b>	Primary Antibodies
<b>Applications:</b>	IF, IHC, WB
<b>Recommended Dilution:</b>	WB: 1:500~1:3000, IHC: 1:50~1:100, IF: 1:100~1:500, ELISA: 1:1000
<b>Reactivity:</b>	Human, Mouse, Rat
<b>Host:</b>	Rabbit
<b>Isotype:</b>	IgG
<b>Clonality:</b>	Polyclonal
<b>Immunogen:</b>	The antiserum was produced against synthesized peptide derived from internal of human MADD.
<b>Formulation:</b>	Phosphate buffered saline (without Mg <sup>2+</sup> and Ca <sup>2+</sup> ), pH 7.4, 150mM NaCl, 0.02% sodium azide and 50% glycerol.
<b>Concentration:</b>	lot specific
<b>Purification:</b>	The antibody was affinity-purified from rabbit antiserum by affinity-chromatography using epitope-specific immunogen.
<b>Conjugation:</b>	Unconjugated
<b>Storage:</b>	Store at -20°C as received.
<b>Stability:</b>	Stable for 12 months from date of receipt.
<b>Gene Name:</b>	MAP kinase activating death domain
<b>Database Link:</b>	<a href="#">NP_001129415</a> <a href="#">Entrez Gene 94193 Rat</a> <a href="#">Entrez Gene 228355 Mouse</a> <a href="#">Entrez Gene 8567 Human</a> <a href="#">Q8WXG6</a>
<b>Synonyms:</b>	DENN; IG20; RAB3GEP
<b>Note:</b>	MADD antibody detects endogenous levels of total MADD protein.
<b>Protein Families:</b>	Druggable Genome



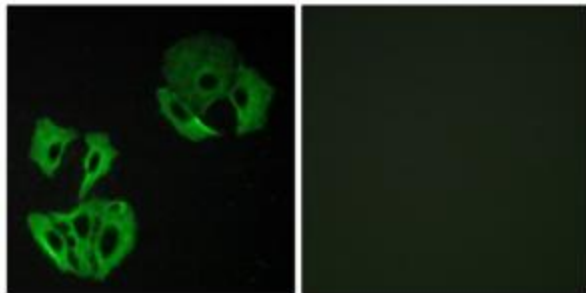
[View online »](#)

**Product images:**


Western blot analysis of extracts from COLO cells, HeLa cells and Jurkat cells, using MADD antibody. The lane on the right is treated with the synthesized peptide.



Immunohistochemistry analysis of paraffin-embedded human brain tissue using MADD antibody. The picture on the right is treated with the synthesized peptide.



Immunofluorescence analysis of A549 cells, using MADD antibody. The picture on the right is treated with the synthesized peptide.