

Product datasheet for **TA314773**

PRP18 homolog (PRPF18) Rabbit Polyclonal Antibody

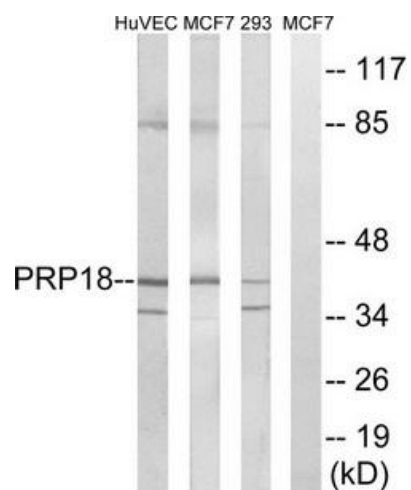
Product data:

Product Type:	Primary Antibodies
Applications:	WB
Recommended Dilution:	WB: 1:500~1:3000, ELISA: 1:5000
Reactivity:	Human, Mouse, Rat
Host:	Rabbit
Isotype:	IgG
Clonality:	Polyclonal
Immunogen:	The antiserum was produced against synthesized peptide derived from internal of human PRPF18.
Formulation:	Phosphate buffered saline (without Mg ²⁺ and Ca ²⁺), pH 7.4, 150mM NaCl, 0.02% sodium azide and 50% glycerol.
Concentration:	lot specific
Purification:	The antibody was affinity-purified from rabbit antiserum by affinity-chromatography using epitope-specific immunogen.
Conjugation:	Unconjugated
Storage:	Store at -20°C as received.
Stability:	Stable for 12 months from date of receipt.
Gene Name:	pre-mRNA processing factor 18
Database Link:	NP_003666 Entrez Gene 67229 MouseEntrez Gene 171552 RatEntrez Gene 8559 Human Q99633
Synonyms:	hPrp18; PRP18
Note:	PRPF18 antibody detects endogenous levels of total PRPF18 protein.
Protein Pathways:	Spliceosome



[View online »](#)

Product images:



Western blot analysis of extracts from HuvEc cells, MCF-7 cells and 293 cells, using PRPF18 antibody. The lane on the right is treated with the synthesized peptide.