

Product datasheet for **TA314771**

CDC14A Rabbit Polyclonal Antibody

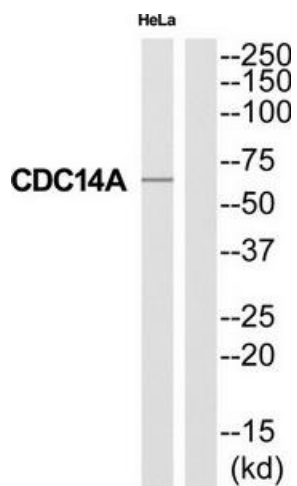
Product data:

Product Type:	Primary Antibodies
Applications:	WB
Recommended Dilution:	WB: 1:500~1:3000, ELISA: 1:20000
Reactivity:	Human
Host:	Rabbit
Isotype:	IgG
Clonality:	Polyclonal
Immunogen:	The antiserum was produced against synthesized peptide derived from Internal of human CC14A.
Formulation:	Phosphate buffered saline (without Mg ²⁺ and Ca ²⁺), pH 7.4, 150mM NaCl, 0.02% sodium azide and 50% glycerol.
Concentration:	lot specific
Purification:	The antibody was affinity-purified from rabbit antiserum by affinity-chromatography using epitope-specific immunogen.
Conjugation:	Unconjugated
Storage:	Store at -20°C as received.
Stability:	Stable for 12 months from date of receipt.
Gene Name:	cell division cycle 14A
Database Link:	NP_003663 Entrez Gene 8556 Human Q9UNH5
Synonyms:	cdc14; DFNB105; hCDC14
Note:	CC14A antibody detects endogenous levels of total CC14A protein.
Protein Families:	Druggable Genome, Phosphatase
Protein Pathways:	Cell cycle



[View online »](#)

Product images:



Western blot analysis of extracts from HeLa cells, using CC14A antibody. The lane on the right is treated with the synthesized peptide.