

Product datasheet for **TA314770**

PRAK (MAPKAPK5) Rabbit Polyclonal Antibody

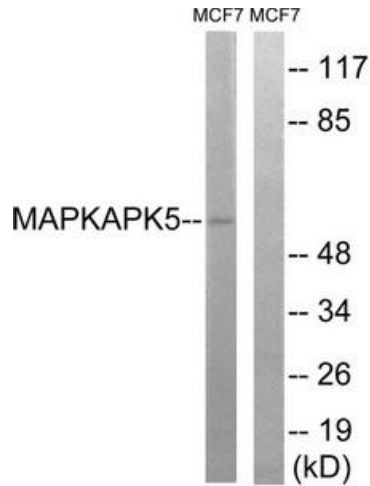
Product data:

Product Type:	Primary Antibodies
Applications:	WB
Recommended Dilution:	WB: 1:500~1:3000, ELISA: 1:10000
Reactivity:	Human, Mouse
Host:	Rabbit
Isotype:	IgG
Clonality:	Polyclonal
Immunogen:	The antiserum was produced against synthesized non-phosphopeptide derived from human MAPKAPK5 around the phosphorylation site of threonine 182 (L-M-TP-P-Q).
Formulation:	Phosphate buffered saline (without Mg ²⁺ and Ca ²⁺), pH 7.4, 150mM NaCl, 0.02% sodium azide and 50% glycerol.
Concentration:	lot specific
Purification:	The antibody was affinity-purified from rabbit antiserum by affinity-chromatography using epitope-specific immunogen.
Conjugation:	Unconjugated
Storage:	Store at -20°C as received.
Stability:	Stable for 12 months from date of receipt.
Gene Name:	mitogen-activated protein kinase-activated protein kinase 5
Database Link:	NP_003659 Entrez Gene 17165 Mouse Entrez Gene 8550 Human Q8IW41
Synonyms:	MAPKAP-K5; MK-5; MK5; PRAK
Note:	MAPKAPK5 (Ab-182) antibody detects endogenous levels of total MAPKAPK5 protein.
Protein Families:	Druggable Genome, Protein Kinase
Protein Pathways:	MAPK signaling pathway

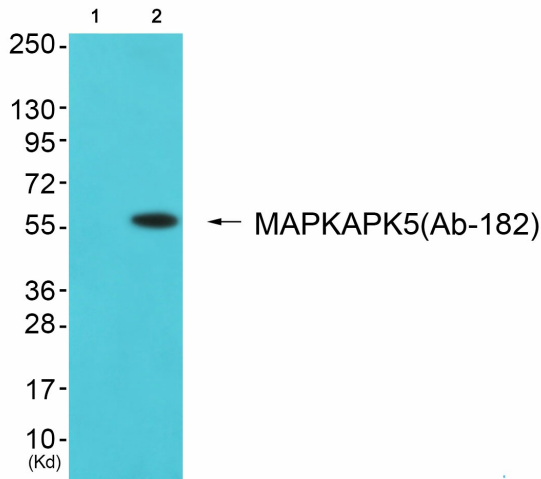


[View online »](#)

Product images:



Western blot analysis of extracts from MCF-7 cells, using MAPKAPK5 (Ab-182) antibody. The lane on the right is treated with the synthesized peptide.



Western blot analysis of extracts from A549 cells (Lane 2), using MAPKAPK5 (Ab-182) Antibody. The lane on the left is treated with synthesized peptide.