

Product datasheet for **TA314763**

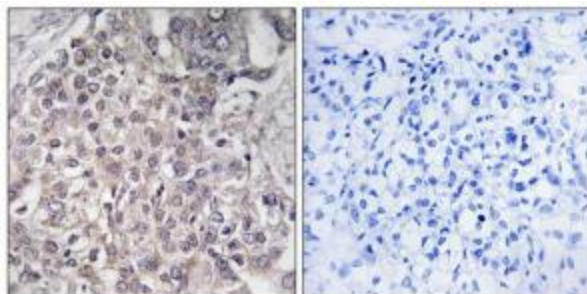
CYP4F2 Rabbit Polyclonal Antibody

Product data:

Product Type:	Primary Antibodies
Applications:	IHC
Recommended Dilution:	IHC: 1:50~1:100, ELISA: 1:40000
Reactivity:	Human
Host:	Rabbit
Isotype:	IgG
Clonality:	Polyclonal
Immunogen:	The antiserum was produced against synthesized peptide derived from N-terminal of human Cytochrome P450 4F2.
Formulation:	Phosphate buffered saline (without Mg ²⁺ and Ca ²⁺), pH 7.4, 150mM NaCl, 0.02% sodium azide and 50% glycerol.
Concentration:	lot specific
Purification:	The antibody was affinity-purified from rabbit antiserum by affinity-chromatography using epitope-specific immunogen.
Conjugation:	Unconjugated
Storage:	Store at -20°C as received.
Stability:	Stable for 12 months from date of receipt.
Gene Name:	cytochrome P450 family 4 subfamily F member 2
Database Link:	NP_001073 Entrez Gene 8529 Human P78329
Synonyms:	CPF2
Note:	Cytochrome P450 4F2 antibody detects endogenous levels of total Cytochrome P450 4F2 protein.
Protein Families:	Druggable Genome, P450, Transmembrane
Protein Pathways:	Arachidonic acid metabolism, Metabolic pathways



[View online »](#)

Product images:

Immunohistochemistry analysis of paraffin-embedded human liver carcinoma tissue using Cytochrome P450 4F2 antibody. The picture on the right is treated with the synthesized peptide.