

Product datasheet for **TA314761**

DGKE Rabbit Polyclonal Antibody

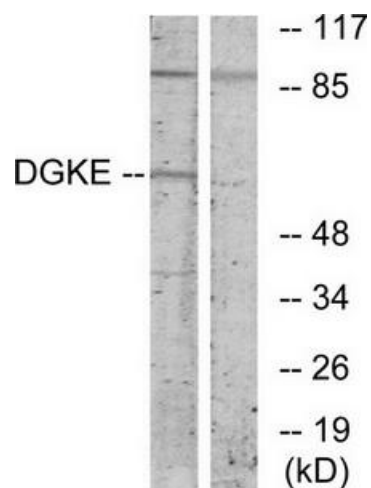
Product data:

Product Type:	Primary Antibodies
Applications:	WB
Recommended Dilution:	WB: 1:500~1:3000, ELISA: 1:5000
Reactivity:	Human, Mouse, Rat
Host:	Rabbit
Isotype:	IgG
Clonality:	Polyclonal
Immunogen:	The antiserum was produced against synthesized peptide derived from internal of human DGKE.
Formulation:	Phosphate buffered saline (without Mg ²⁺ and Ca ²⁺), pH 7.4, 150mM NaCl, 0.02% sodium azide and 50% glycerol.
Concentration:	lot specific
Purification:	The antibody was affinity-purified from rabbit antiserum by affinity-chromatography using epitope-specific immunogen.
Conjugation:	Unconjugated
Storage:	Store at -20°C as received.
Stability:	Stable for 12 months from date of receipt.
Gene Name:	diacylglycerol kinase epsilon
Database Link:	NP_003638 Entrez Gene 56077 MouseEntrez Gene 497978 RatEntrez Gene 8526 Human P52429
Synonyms:	AHUS7; DAGK5; DAGK6; DGK; NPHS7
Note:	DGKE antibody detects endogenous levels of total DGKE protein.
Protein Families:	Druggable Genome, Transmembrane
Protein Pathways:	Glycerolipid metabolism, Glycerophospholipid metabolism, Metabolic pathways, Phosphatidylinositol signaling system



[View online »](#)

Product images:



Western blot analysis of extracts from K562 cells, using DGKE antibody. The lane on the right is treated with the synthesized peptide.