

Product datasheet for **TA314760**

MMP23 (MMP23B) Rabbit Polyclonal Antibody

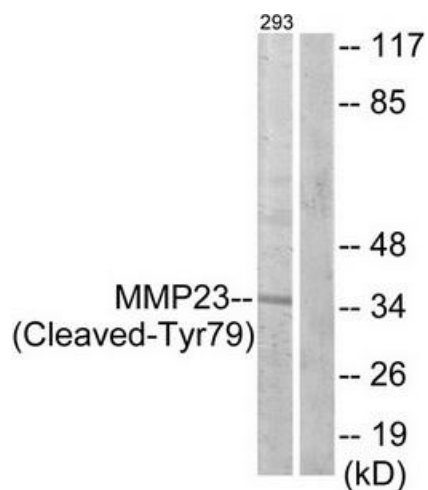
Product data:

Product Type:	Primary Antibodies
Applications:	WB
Recommended Dilution:	WB: 1:500~1:3000, ELISA: 1:5000
Reactivity:	Human, Mouse, Rat
Host:	Rabbit
Isotype:	IgG
Clonality:	Polyclonal
Immunogen:	The antiserum was produced against synthesized peptide derived from human MMP23.
Formulation:	Phosphate buffered saline (without Mg ²⁺ and Ca ²⁺), pH 7.4, 150mM NaCl, 0.02% sodium azide and 50% glycerol.
Concentration:	lot specific
Purification:	The antibody was affinity-purified from rabbit antiserum by affinity-chromatography using epitope-specific immunogen.
Conjugation:	Unconjugated
Storage:	Store at -20°C as received.
Stability:	Stable for 12 months from date of receipt.
Gene Name:	matrix metalloproteinase 23B
Database Link:	NP_008914 Entrez Gene 8510 Human O75900
Synonyms:	MIFR; MIFR-1; MMP22; MMP23A
Note:	MMP23 (Cleaved-Tyr79) antibody detects endogenous levels of fragment of activated MMP23 resulting from cleavage adjacent to Tyr79.
Protein Families:	Druggable Genome, Protease, Secreted Protein, Transmembrane



[View online »](#)

Product images:



Western blot analysis of extracts from 293 cells, treated with etoposide (25uM, 1 hour), using MMP23 (Cleaved-Tyr79) antibody. The lane on the right is treated with the synthesized peptide.