

Product datasheet for **TA314756**

MAP4K3 Rabbit Polyclonal Antibody

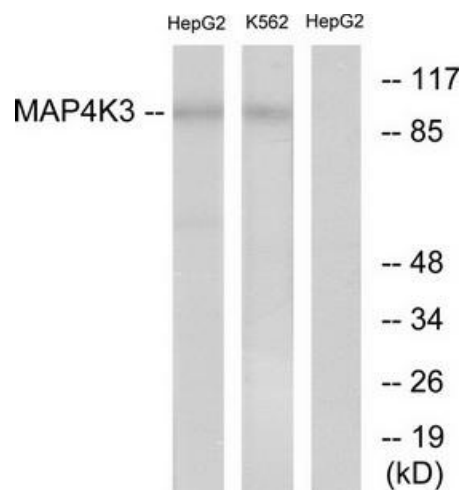
Product data:

Product Type:	Primary Antibodies
Applications:	WB
Recommended Dilution:	WB: 1:500~1:3000, ELISA: 1:20000
Reactivity:	Human, Mouse, Rat
Host:	Rabbit
Isotype:	IgG
Clonality:	Polyclonal
Immunogen:	The antiserum was produced against synthesized peptide derived from N-terminal of human MAP4K3.
Formulation:	Phosphate buffered saline (without Mg ²⁺ and Ca ²⁺), pH 7.4, 150mM NaCl, 0.02% sodium azide and 50% glycerol.
Concentration:	lot specific
Purification:	The antibody was affinity-purified from rabbit antiserum by affinity-chromatography using epitope-specific immunogen.
Conjugation:	Unconjugated
Storage:	Store at -20°C as received.
Stability:	Stable for 12 months from date of receipt.
Gene Name:	mitogen-activated protein kinase kinase kinase kinase 3
Database Link:	NP_003609 Entrez Gene 170920 Rat Entrez Gene 225028 Mouse Entrez Gene 8491 Human Q8IVH8
Synonyms:	GLK; MAPKKKK3; MEKKK 3; MEKKK3; RAB8IPL1
Note:	MAP4K3 antibody detects endogenous levels of total MAP4K3 protein.
Protein Families:	Druggable Genome, Protein Kinase
Protein Pathways:	MAPK signaling pathway



[View online »](#)

Product images:



Western blot analysis of extracts from HepG2 cells and K562 cells, using MAP4K3 antibody. The lane on the right is treated with the synthesized peptide.