

## Product datasheet for **TA314750**

### GNPAT Rabbit Polyclonal Antibody

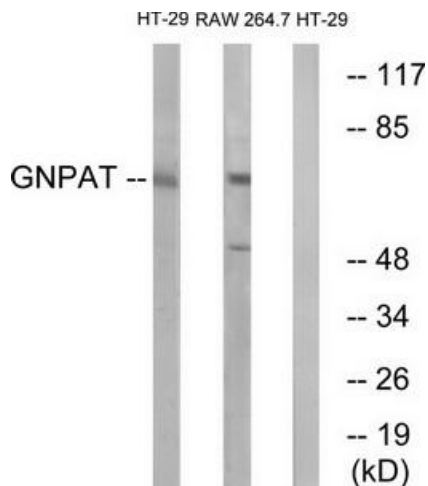
#### Product data:

Product Type:	Primary Antibodies
Applications:	WB
Recommended Dilution:	WB: 1:500~1:3000, ELISA: 1:20000
Reactivity:	Human
Host:	Rabbit
Isotype:	IgG
Clonality:	Polyclonal
Immunogen:	The antiserum was produced against synthesized peptide derived from C-terminal of human GNPAT.
Formulation:	Phosphate buffered saline (without Mg <sup>2+</sup> and Ca <sup>2+</sup> ), pH 7.4, 150mM NaCl, 0.02% sodium azide and 50% glycerol.
Concentration:	lot specific
Purification:	The antibody was affinity-purified from rabbit antiserum by affinity-chromatography using epitope-specific immunogen.
Conjugation:	Unconjugated
Storage:	Store at -20°C as received.
Stability:	Stable for 12 months from date of receipt.
Gene Name:	glyceronephosphate O-acyltransferase
Database Link:	<a href="#">NP_055051</a> <a href="#">Entrez Gene 8443 Human</a> <a href="#">O15228</a>
Synonyms:	DAP-AT; DAPAT; DHAPAT
Note:	GNPAT antibody detects endogenous levels of total GNPAT protein.
Protein Families:	Druggable Genome
Protein Pathways:	Glycerophospholipid metabolism

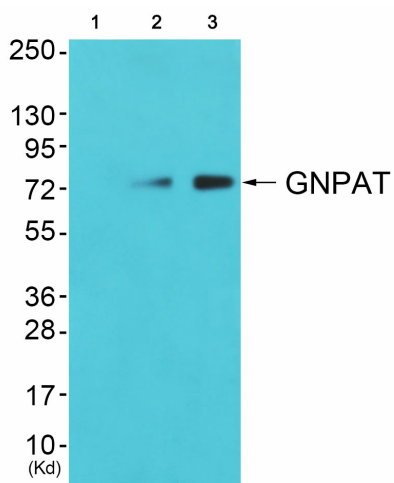


[View online »](#)

Product images:



Western blot analysis of extracts from HT-29 cells and RAW264.7 cells, using GNPAT antibody. The lane on the right is treated with the synthesized peptide.



Western blot analysis of extracts from HuvEc cells (Lane 2) and HepG2 cells (Lane 3), using GNPAT Antibody. The lane on the left is treated with synthesized peptide.