

Product datasheet for **TA314749**

RAD54 (RAD54L) Rabbit Polyclonal Antibody

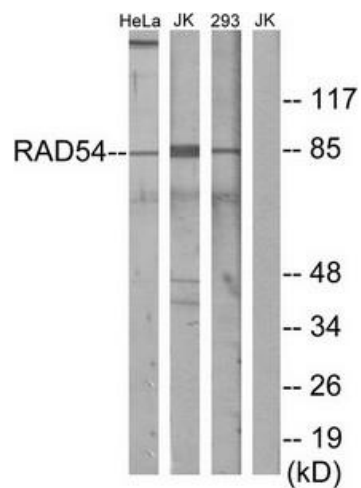
Product data:

Product Type:	Primary Antibodies
Applications:	WB
Recommended Dilution:	WB: 1:500~1:3000, ELISA: 1:1000
Reactivity:	Human, Mouse
Host:	Rabbit
Isotype:	IgG
Clonality:	Polyclonal
Immunogen:	The antiserum was produced against synthesized peptide derived from internal of human RAD54.
Formulation:	Phosphate buffered saline (without Mg ²⁺ and Ca ²⁺), pH 7.4, 150mM NaCl, 0.02% sodium azide and 50% glycerol.
Concentration:	lot specific
Purification:	The antibody was affinity-purified from rabbit antiserum by affinity-chromatography using epitope-specific immunogen.
Conjugation:	Unconjugated
Storage:	Store at -20°C as received.
Stability:	Stable for 12 months from date of receipt.
Gene Name:	RAD54-like (<i>S. cerevisiae</i>)
Database Link:	NP_001136020 Entrez Gene 19366 Mouse Entrez Gene 8438 Human Q92698
Synonyms:	hHR54; HR54; hRAD54; RAD54A
Note:	RAD54 antibody detects endogenous levels of total RAD54 protein.
Protein Families:	Druggable Genome, Stem cell - Pluripotency
Protein Pathways:	Homologous recombination



[View online »](#)

Product images:



Western blot analysis of extracts from HeLa cells, Jurkat cells and 293 cells, using RAD54 antibody. The lane on the right is treated with the synthesized peptide.