

Product datasheet for **TA314747**

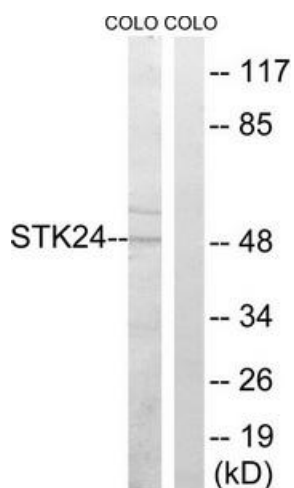
MST3 (STK24) Rabbit Polyclonal Antibody

Product data:

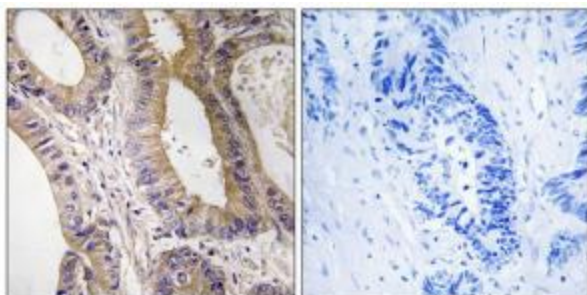
Product Type:	Primary Antibodies
Applications:	IHC, WB
Recommended Dilution:	WB: 1:500~1:3000, IHC: 1:50~1:100, ELISA: 1:40000
Reactivity:	Human, Mouse, Rat
Host:	Rabbit
Isotype:	IgG
Clonality:	Polyclonal
Immunogen:	The antiserum was produced against synthesized peptide derived from internal of human STK24.
Formulation:	Phosphate buffered saline (without Mg ²⁺ and Ca ²⁺), pH 7.4, 150mM NaCl, 0.02% sodium azide and 50% glycerol.
Concentration:	lot specific
Purification:	The antibody was affinity-purified from rabbit antiserum by affinity-chromatography using epitope-specific immunogen.
Conjugation:	Unconjugated
Storage:	Store at -20°C as received.
Stability:	Stable for 12 months from date of receipt.
Gene Name:	serine/threonine kinase 24
Database Link:	NP_001027467 Entrez Gene 223255 MouseEntrez Gene 361092 RatEntrez Gene 8428 Human Q9Y6E0
Synonyms:	HEL-S-95; MST3; MST3B; STE20; STK3
Note:	STK24 antibody detects endogenous levels of total STK24 protein.
Protein Families:	Druggable Genome, Protein Kinase



[View online »](#)

Product images:

Western blot analysis of extracts from COLO cells, using STK24 antibody. The lane on the right is treated with the synthesized peptide.



Immunohistochemistry analysis of paraffin-embedded human colon carcinoma tissue, using STK24 antibody. The picture on the right is treated with the synthesized peptide.