

## Product datasheet for **TA314743**

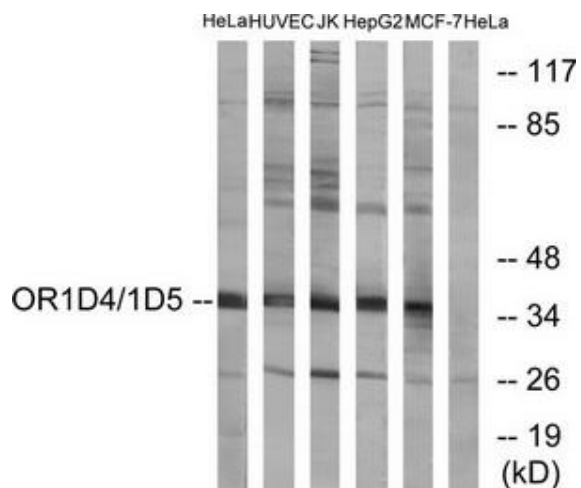
### OR1D5 Rabbit Polyclonal Antibody

#### Product data:

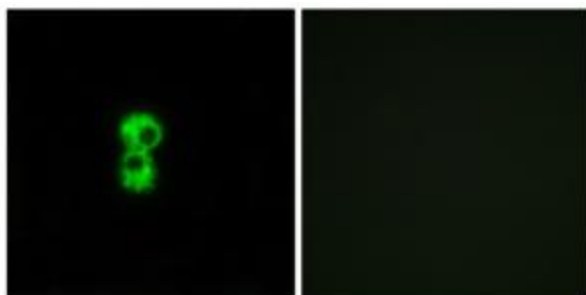
|                       |  |
|-----------------------|--|
| Product Type:         | Primary Antibodies   |
| Applications:         | IF, WB   |
| Recommended Dilution: | WB: 1:500~1:3000, IF: 1:100~1:500, ELISA: 1:20000  |
| Reactivity:           | Human  |
| Host:                 | Rabbit   |
| Isotype:              | IgG  |
| Clonality:            | Polyclonal   |
| Immunogen:            | The antiserum was produced against synthesized peptide derived from internal of human OR1D4/1D5.                                     |
| Formulation:          | Phosphate buffered saline (without Mg <sup>2+</sup> and Ca <sup>2+</sup> ), pH 7.4, 150mM NaCl, 0.02% sodium azide and 50% glycerol. |
| Concentration:        | lot specific   |
| Purification:         | The antibody was affinity-purified from rabbit antiserum by affinity-chromatography using epitope-specific immunogen.                |
| Conjugation:          | Unconjugated   |
| Storage:              | Store at -20°C as received.  |
| Stability:            | Stable for 12 months from date of receipt.   |
| Gene Name:            | olfactory receptor family 1 subfamily D member 5   |
| Database Link:        | <a href="#">NP_055381</a><br><a href="#">Entrez Gene 8386 Human</a><br><a href="#">P58170</a>  |
| Synonyms:             | C17orf2; OR1D4; OR17-2; OR17-30; OR17-31   |
| Note:                 | OR1D4/1D5 antibody detects endogenous levels of total OR1D4/1D5 protein.   |
| Protein Families:     | Druggable Genome, Transmembrane  |
| Protein Pathways:     | Olfactory transduction   |



[View online »](#)

**Product images:**


Western blot analysis of extracts from HeLa cells, HUVEC cells, Jurkat cells, HepG2 cells and MCF-7 cells, using OR1D4/1D5 antibody. The lane on the right is treated with the synthesized peptide.



Immunofluorescence analysis of MCF-7 cells, using OR1D4/1D5 antibody. The picture on the right is treated with the synthesized peptide.