

## Product datasheet for **TA314740**

### H3FA (HIST1H3A) Rabbit Polyclonal Antibody

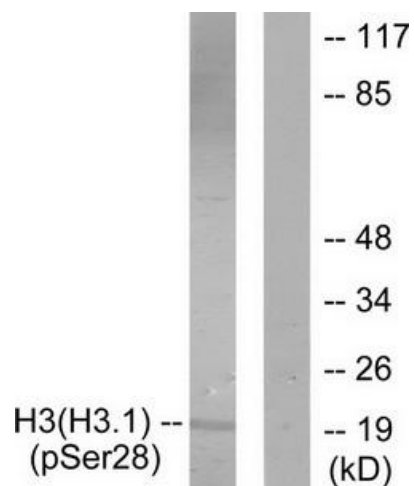
#### Product data:

Product Type:	Primary Antibodies
Applications:	WB
Recommended Dilution:	WB: 1:500~1:3000, ELISA: 1:1000
Reactivity:	Human, Mouse, Rat
Modifications:	Phospho-specific
Host:	Rabbit
Isotype:	IgG
Clonality:	Polyclonal
Immunogen:	The antiserum was produced against synthesized phosphopeptide derived from human Histone H3 around the phosphorylation site of serine 28 (R-K-SP-A-P).
Formulation:	Phosphate buffered saline (without Mg <sup>2+</sup> and Ca <sup>2+</sup> ), pH 7.4, 150mM NaCl, 0.02% sodium azide and 50% glycerol.
Concentration:	lot specific
Purification:	The antibody was affinity-purified from rabbit antiserum by affinity-chromatography using epitope-specific immunogen.
Conjugation:	Unconjugated
Storage:	Store at -20°C as received.
Stability:	Stable for 12 months from date of receipt.
Gene Name:	histone cluster 1, H3a
Database Link:	<a href="#">NP_003520</a> <a href="#">Entrez Gene 360198 Mouse</a> <a href="#">Entrez Gene 679994 Rat</a> <a href="#">Entrez Gene 8350 Human</a> <a href="#">P68431</a>
Synonyms:	A; H3; H3FA
Note:	Histone H3 (Phospho-Ser28) antibody detects endogenous levels of Histone H3 only when phosphorylated at serine 28.
Protein Pathways:	Systemic lupus erythematosus



[View online »](#)

## Product images:



Western blot analysis of extracts from HuvEc cells, treated with Serum (20%, 30mins), using Histone H3 (Phospho-Ser28) antibody (#TA314740). The lane on the right is treated with the synthesized peptide.