

Product datasheet for **TA314737**

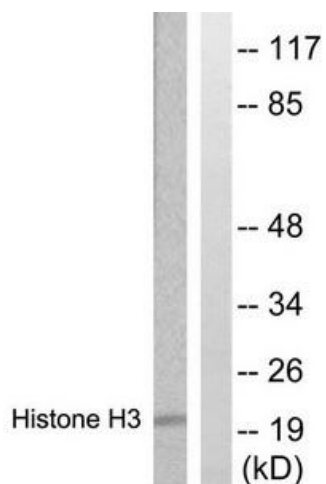
H3FA (HIST1H3A) Rabbit Polyclonal Antibody

Product data:

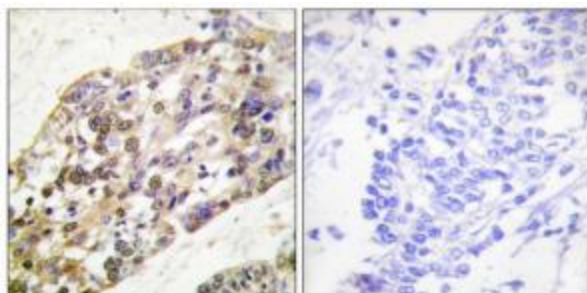
Product Type:	Primary Antibodies
Applications:	IHC, WB
Recommended Dilution:	WB: 1:500~1:3000, IHC: 1:50~1:100, ELISA: 1:1000
Reactivity:	Human, Mouse, Rat
Host:	Rabbit
Isotype:	IgG
Clonality:	Polyclonal
Immunogen:	The antiserum was produced against synthesized non-phosphopeptide derived from human Histone H3 around the phosphorylation site of serine 28 (R-K-SP-A-P).
Formulation:	Phosphate buffered saline (without Mg ²⁺ and Ca ²⁺), pH 7.4, 150mM NaCl, 0.02% sodium azide and 50% glycerol.
Concentration:	lot specific
Purification:	The antibody was affinity-purified from rabbit antiserum by affinity-chromatography using epitope-specific immunogen.
Conjugation:	Unconjugated
Storage:	Store at -20°C as received.
Stability:	Stable for 12 months from date of receipt.
Gene Name:	histone cluster 1, H3a
Database Link:	NP_003520 Entrez Gene 360198 MouseEntrez Gene 679994 RatEntrez Gene 8350 Human P68431
Synonyms:	A; H3; H3FA
Note:	Histone H3 (Ab-28) antibody detects endogenous levels of total Histone H3 protein.
Protein Pathways:	Systemic lupus erythematosus



[View online »](#)

Product images:

Western blot analysis of extracts from HuvEc cells treated with Serum (20%, 30mins), using Histone H3 (Ab-28) antibody. The lane on the right is treated with the synthesized peptide.



Immunohistochemistry analysis of paraffin-embedded human breast carcinoma tissue using Histone H3 (Ab-28) antibody. The picture on the right is treated with the synthesized peptide.