

Product datasheet for **TA314734S**

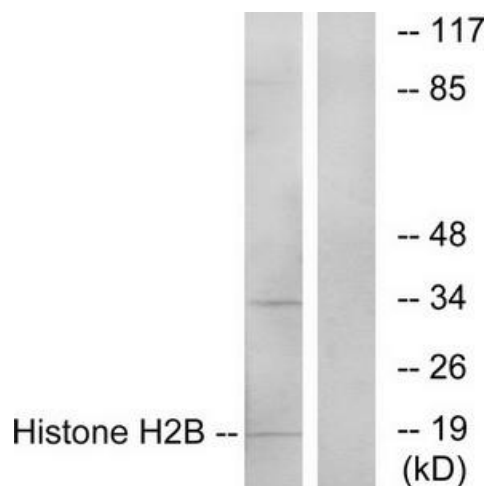
H2BC9 Rabbit Polyclonal Antibody

Product data:

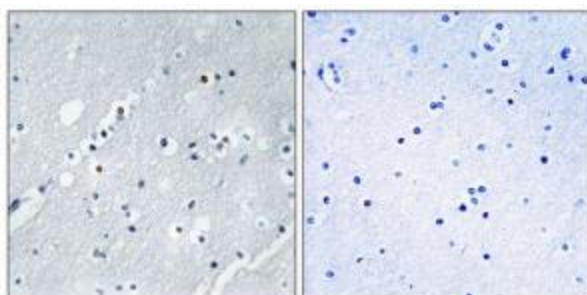
Product Type:	Primary Antibodies
Applications:	IF, IHC, WB
Recommended Dilution:	WB: 1:500~1:3000, IHC: 1:50~1:100, IF: 1:100~1:500, ELISA: 1:5000
Reactivity:	Human, Mouse
Host:	Rabbit
Isotype:	IgG
Clonality:	Polyclonal
Immunogen:	The antiserum was produced against synthesized peptide derived from internal of human Histone H2B.
Formulation:	Phosphate buffered saline (without Mg ²⁺ and Ca ²⁺), pH 7.4, 150mM NaCl, 0.02% sodium azide and 50% glycerol.
Concentration:	lot specific
Purification:	The antibody was affinity-purified from rabbit antiserum by affinity-chromatography using epitope-specific immunogen.
Conjugation:	Unconjugated
Storage:	Store at -20°C as received.
Stability:	Stable for 12 months from date of receipt.
Gene Name:	histone cluster 1, H2bh
Database Link:	NP_003515 Entrez Gene 319182 Mouse Entrez Gene 8345 Human Q93079
Synonyms:	H2B; H2BFJ; j
Note:	Histone H2B antibody detects endogenous levels of total Histone H2B protein.
Protein Pathways:	Systemic lupus erythematosus



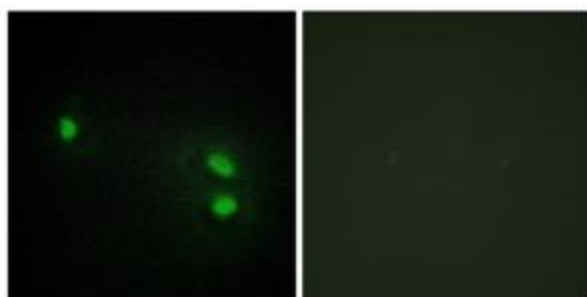
[View online »](#)

Product images:

Western blot analysis of extracts from A549 cells, using Histone H2B antibody. The lane on the right is treated with the synthesized peptide.



Immunohistochemistry analysis of paraffin-embedded human brain tissue using Histone H2B antibody. The picture on the right is treated with the synthesized peptide.



Immunofluorescence analysis of HeLa cells, using Histone H2B antibody. The picture on the right is treated with the synthesized peptide.