

Product datasheet for **TA314732**

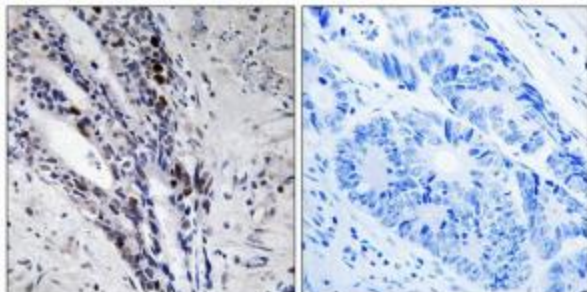
HIST1H2AK (HIST1H2AI) Rabbit Polyclonal Antibody

Product data:

Product Type:	Primary Antibodies
Applications:	IHC
Recommended Dilution:	IHC: 1:50~1:100, ELISA: 1:5000
Reactivity:	Human, Mouse, Rat
Host:	Rabbit
Isotype:	IgG
Clonality:	Polyclonal
Immunogen:	The antiserum was produced against synthesized peptide derived from Internal of human Histone H2A.
Formulation:	Phosphate buffered saline (without Mg ²⁺ and Ca ²⁺), pH 7.4, 150mM NaCl, 0.02% sodium azide and 50% glycerol.
Concentration:	lot specific
Purification:	The antibody was affinity-purified from rabbit antiserum by affinity-chromatography using epitope-specific immunogen.
Conjugation:	Unconjugated
Storage:	Store at -20°C as received.
Stability:	Stable for 12 months from date of receipt.
Gene Name:	histone cluster 1, H2ai
Database Link:	NP_003500 Entrez Gene 319191 MouseEntrez Gene 502129 RatEntrez Gene 8329 Human P0C0S8
Synonyms:	c; H2A; H2AFC
Note:	Histone H2A antibody detects endogenous levels of total Histone H2A protein.
Protein Pathways:	Systemic lupus erythematosus



[View online »](#)

Product images:

Immunohistochemistry analysis of paraffin-embedded human colon carcinoma tissue using Histone H2A antibody. The picture on the right is treated with the synthesized peptide.