

Product datasheet for **TA314729**

Frizzled 8 (FZD8) Rabbit Polyclonal Antibody

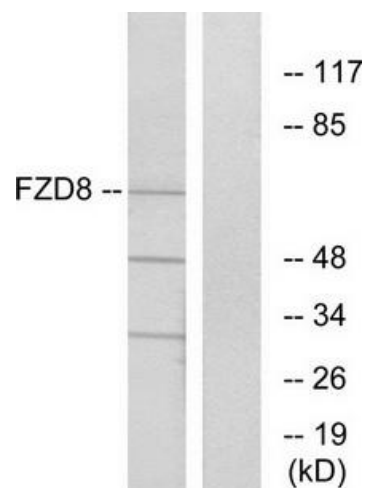
Product data:

Product Type:	Primary Antibodies
Applications:	WB
Recommended Dilution:	WB: 1:500~1:3000, ELISA: 1:5000
Reactivity:	Human, Mouse, Rat
Host:	Rabbit
Isotype:	IgG
Clonality:	Polyclonal
Immunogen:	The antiserum was produced against synthesized peptide derived from internal of human FZD8
Formulation:	Phosphate buffered saline (without Mg ²⁺ and Ca ²⁺), pH 7.4, 150mM NaCl, 0.02% sodium azide and 50% glycerol.
Concentration:	lot specific
Purification:	The antibody was affinity-purified from rabbit antiserum by affinity-chromatography using epitope-specific immunogen.
Conjugation:	Unconjugated
Storage:	Store at -20°C as received.
Stability:	Stable for 12 months from date of receipt.
Gene Name:	frizzled class receptor 8
Database Link:	NP_114072 Entrez Gene 14370 MouseEntrez Gene 364754 RatEntrez Gene 8325 Human Q9H461
Synonyms:	FZ-8; hFZ8
Note:	FZD8 antibody detects endogenous levels of total FZD8 protein.
Protein Families:	Druggable Genome, Transmembrane
Protein Pathways:	Basal cell carcinoma, Colorectal cancer, Melanogenesis, Pathways in cancer, Wnt signaling pathway



[View online »](#)

Product images:



Western blot analysis of extracts from Jurkat cells, using FZD8 antibody. The lane on the right is treated with the synthesized peptide.