

Product datasheet for **TA314722**

Dysferlin (DYSF) Rabbit Polyclonal Antibody

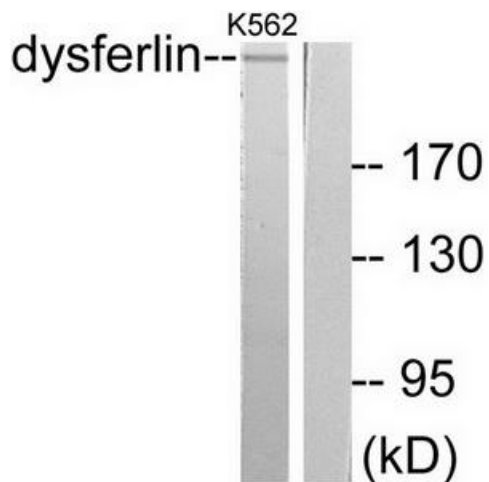
Product data:

Product Type:	Primary Antibodies
Applications:	WB
Recommended Dilution:	WB: 1:500~1:3000, ELISA: 1:10000
Reactivity:	Human, Mouse
Host:	Rabbit
Isotype:	IgG
Clonality:	Polyclonal
Immunogen:	The antiserum was produced against synthesized peptide derived from human Dysferlin.
Formulation:	Phosphate buffered saline (without Mg ²⁺ and Ca ²⁺), pH 7.4, 150mM NaCl, 0.02% sodium azide and 50% glycerol.
Concentration:	lot specific
Purification:	The antibody was affinity-purified from rabbit antiserum by affinity-chromatography using epitope-specific immunogen.
Conjugation:	Unconjugated
Storage:	Store at -20°C as received.
Stability:	Stable for 12 months from date of receipt.
Gene Name:	dysferlin
Database Link:	NP_001123927 Entrez Gene 26903 Mouse Entrez Gene 8291 Human O75923
Synonyms:	FER1L1; LGMD2B; MMD1
Note:	Dysferlin antibody detects endogenous levels of total Dysferlin protein.
Protein Families:	Transmembrane

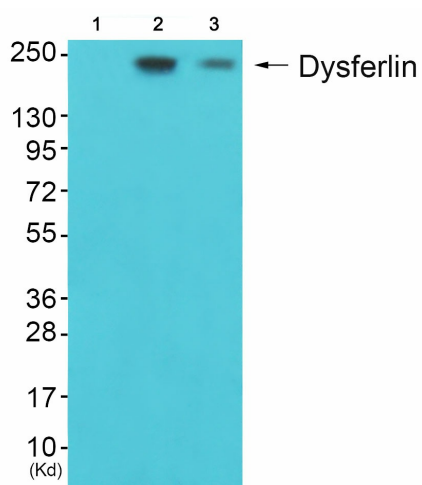


[View online »](#)

Product images:



Western blot analysis of extracts from K562 cells, using Dysferlin antibody. The lane on the right is treated with the synthesized peptide.



Western blot analysis of extracts from JK cells (Lane 2) and K562 cells (Lane 3), using Dysferlin Antibody. The lane on the left is treated with synthesized peptide.