

## Product datasheet for **TA314719**

### AKAP1 Rabbit Polyclonal Antibody

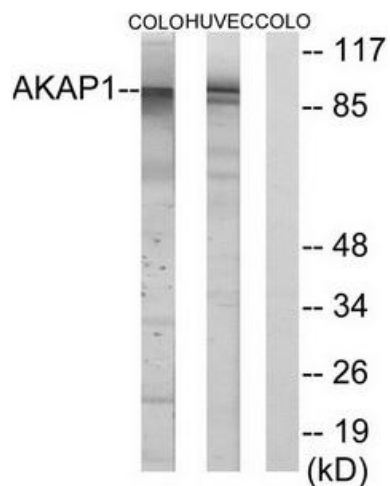
#### Product data:

Product Type:	Primary Antibodies
Applications:	IF, IHC, WB
Recommended Dilution:	WB: 1:500~1:3000, IHC: 1:50~1:100, IF: 1:100~1:500, ELISA: 1:1000
Reactivity:	Human
Host:	Rabbit
Isotype:	IgG
Clonality:	Polyclonal
Immunogen:	The antiserum was produced against synthesized peptide derived from internal of human AKAP1.
Formulation:	Phosphate buffered saline (without Mg <sup>2+</sup> and Ca <sup>2+</sup> ), pH 7.4, 150mM NaCl, 0.02% sodium azide and 50% glycerol.
Concentration:	lot specific
Purification:	The antibody was affinity-purified from rabbit antiserum by affinity-chromatography using epitope-specific immunogen.
Conjugation:	Unconjugated
Storage:	Store at -20°C as received.
Stability:	Stable for 12 months from date of receipt.
Gene Name:	A-kinase anchoring protein 1
Database Link:	<a href="#">NP_644804</a> <a href="#">Entrez Gene 8165 Human</a> <a href="#">Q92667</a>
Synonyms:	AKAP; AKAP84; AKAP121; AKAP149; D-AKAP1; MGC1807; PRKA1; SAKAP84
Note:	AKAP1 antibody detects endogenous levels of total AKAP1 protein.
Protein Families:	Druggable Genome, Transmembrane

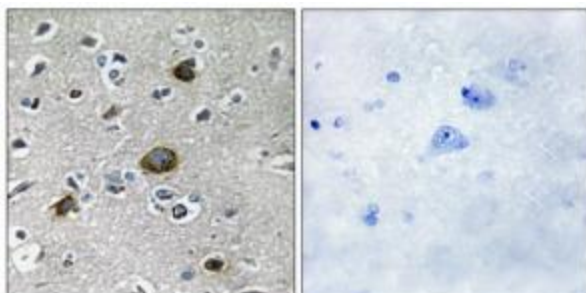


[View online »](#)

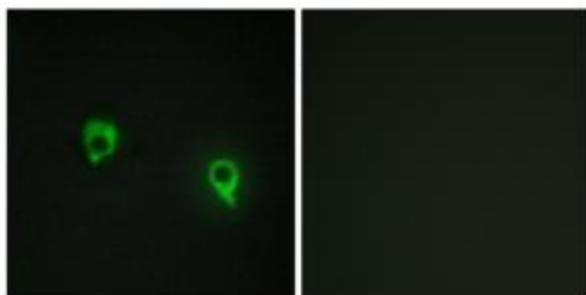
## Product images:



Western blot analysis of extracts from HUVEC cells and COLO cells, using AKAP1 antibody. The lane on the right is treated with the synthesized peptide.



Immunohistochemistry analysis of paraffin-embedded human brain tissue using AKAP1 antibody. The picture on the right is treated with the synthesized peptide.



Immunofluorescence analysis of COS7 cells, using AKAP1 antibody. The picture on the right is treated with the synthesized peptide.