

Product datasheet for **TA314718**

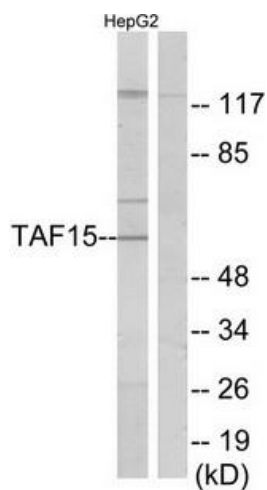
TAF15 Rabbit Polyclonal Antibody

Product data:

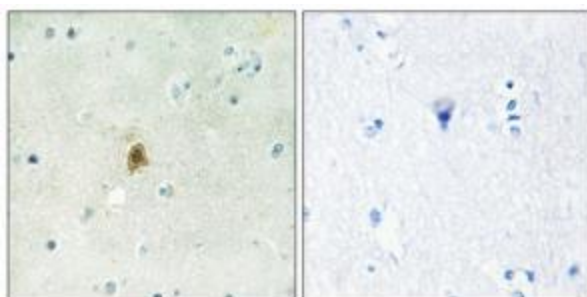
Product Type:	Primary Antibodies
Applications:	IHC, WB
Recommended Dilution:	WB: 1:500~1:3000, IHC: 1:50~1:100, ELISA: 1:1000
Reactivity:	Human, Mouse
Host:	Rabbit
Isotype:	IgG
Clonality:	Polyclonal
Immunogen:	The antiserum was produced against synthesized peptide derived from internal of human TAF15.
Formulation:	Phosphate buffered saline (without Mg ²⁺ and Ca ²⁺), pH 7.4, 150mM NaCl, 0.02% sodium azide and 50% glycerol.
Concentration:	lot specific
Purification:	The antibody was affinity-purified from rabbit antiserum by affinity-chromatography using epitope-specific immunogen.
Conjugation:	Unconjugated
Storage:	Store at -20°C as received.
Stability:	Stable for 12 months from date of receipt.
Gene Name:	TATA-box binding protein associated factor 15
Database Link:	NP_003478 Entrez Gene 70439 Mouse Entrez Gene 8148 Human Q92804
Synonyms:	Npl3; RBP56; TAF2N; TAFII68
Note:	TAF15 antibody detects endogenous levels of total TAF15 protein.
Protein Families:	Druggable Genome



[View online »](#)

Product images:


Western blot analysis of extracts from HepG2 cells, using TAF15 antibody. The lane on the right is treated with the synthesized peptide.



Immunohistochemistry analysis of paraffin-embedded human brain tissue using TAF15 antibody. The picture on the right is treated with the synthesized peptide.