

Product datasheet for **TA314713**

BRD3 Rabbit Polyclonal Antibody

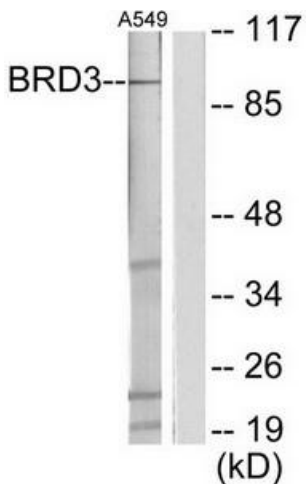
Product data:

Product Type:	Primary Antibodies
Applications:	WB
Recommended Dilution:	WB: 1:500~1:3000, ELISA: 1:20000
Reactivity:	Human, Mouse
Host:	Rabbit
Isotype:	IgG
Clonality:	Polyclonal
Immunogen:	The antiserum was produced against synthesized peptide derived from internal of human BRD3.
Formulation:	Phosphate buffered saline (without Mg ²⁺ and Ca ²⁺), pH 7.4, 150mM NaCl, 0.02% sodium azide and 50% glycerol.
Concentration:	lot specific
Purification:	The antibody was affinity-purified from rabbit antiserum by affinity-chromatography using epitope-specific immunogen.
Conjugation:	Unconjugated
Storage:	Store at -20°C as received.
Stability:	Stable for 12 months from date of receipt.
Gene Name:	bromodomain containing 3
Database Link:	NP_031397 Entrez Gene 67382 Mouse Entrez Gene 8019 Human Q15059
Synonyms:	ORFX; RING3L
Note:	BRD3 antibody detects endogenous levels of total BRD3 protein.
Protein Families:	Protein Kinase

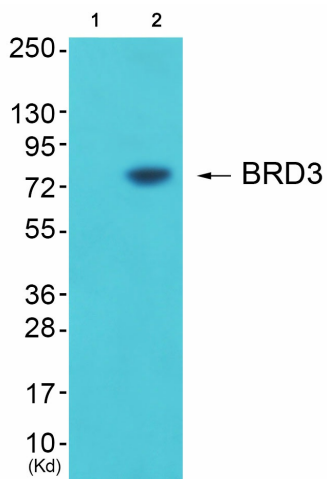


[View online »](#)

Product images:



Western blot analysis of extracts from A549 cells, using BRD3 antibody. The lane on the right is treated with the synthesized peptide.



Western blot analysis of extracts from cos-7 cells (Lane 2), using BRD3 Antibody. The lane on the left is treated with synthesized peptide.