

## Product datasheet for TA314712

### NOR1 (NR4A3) Rabbit Polyclonal Antibody

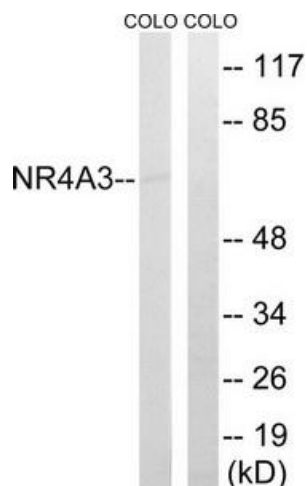
#### Product data:

Product Type:	Primary Antibodies
Applications:	IP, WB
Recommended Dilution:	WB: 1:500~1:3000, ELISA: 1:40000
Reactivity:	Human, Mouse, Rat
Host:	Rabbit
Isotype:	IgG
Clonality:	Polyclonal
Immunogen:	The antiserum was produced against synthesized peptide derived from internal of human NR4A3.
Formulation:	Phosphate buffered saline (without Mg <sup>2+</sup> and Ca <sup>2+</sup> ), pH 7.4, 150mM NaCl, 0.02% sodium azide and 50% glycerol.
Concentration:	lot specific
Purification:	The antibody was affinity-purified from rabbit antiserum by affinity-chromatography using epitope-specific immunogen.
Conjugation:	Unconjugated
Storage:	Store at -20°C as received.
Stability:	Stable for 12 months from date of receipt.
Gene Name:	nuclear receptor subfamily 4 group A member 3
Database Link:	<a href="#">NP_008912</a> <a href="#">Entrez Gene 18124 MouseEntrez Gene 58853 RatEntrez Gene 8013 Human Q92570</a>
Synonyms:	CHN; CSMF; MINOR; NOR1; TEC
Note:	NR4A3 antibody detects endogenous levels of total NR4A3 protein
Protein Families:	Druggable Genome, Nuclear Hormone Receptor, Transcription Factors



[View online »](#)

Product images:



Western blot analysis of extracts from COLO cells, using NR4A3 antibody. The lane on the right is treated with the synthesized peptide.

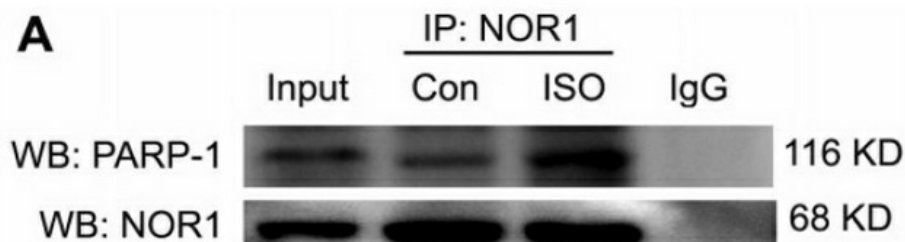


Figure from citation: Co-IP assay was performed to show the interaction between NOR1 (also known as NR4A3) and PARP-1 after immunoprecipitation of cardiomyocyte nuclear extracts with anti-NR4A3 antibody. Dilution: 1:300 [View Citation](#)