

Product datasheet for **TA314708**

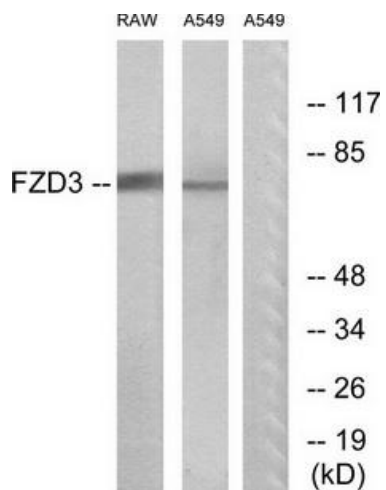
FZD3 Rabbit Polyclonal Antibody

Product data:

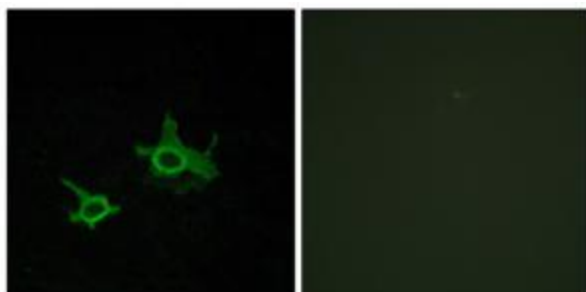
Product Type:	Primary Antibodies
Applications:	IF, WB
Recommended Dilution:	WB: 1:500~1:3000, IF: 1:100~1:500, ELISA: 1:1000
Reactivity:	Human, Mouse
Host:	Rabbit
Isotype:	IgG
Clonality:	Polyclonal
Immunogen:	The antiserum was produced against synthesized peptide derived from internal of human FZD3.
Formulation:	Phosphate buffered saline (without Mg ²⁺ and Ca ²⁺), pH 7.4, 150mM NaCl, 0.02% sodium azide and 50% glycerol.
Concentration:	lot specific
Purification:	The antibody was affinity-purified from rabbit antiserum by affinity-chromatography using epitope-specific immunogen.
Conjugation:	Unconjugated
Storage:	Store at -20°C as received.
Stability:	Stable for 12 months from date of receipt.
Gene Name:	frizzled class receptor 3
Database Link:	NP_059108 Entrez Gene 14365 Mouse Entrez Gene 7976 Human Q9NPG1
Synonyms:	Fz-3
Note:	FZD3 antibody detects endogenous levels of total FZD3 protein.
Protein Families:	Druggable Genome, GPCR, Transmembrane
Protein Pathways:	Basal cell carcinoma, Colorectal cancer, Melanogenesis, Pathways in cancer, Wnt signaling pathway



[View online »](#)

Product images:


Western blot analysis of extracts from RAW264.7 cells and A549 cells, using FZD3 antibody. The lane on the right is treated with the synthesized peptide.



Immunofluorescence analysis of COS-7 cells, using FZD3 antibody. The picture on the right is treated with the synthesized peptide.