

Product datasheet for **TA314706**

SLC39A7 Rabbit Polyclonal Antibody

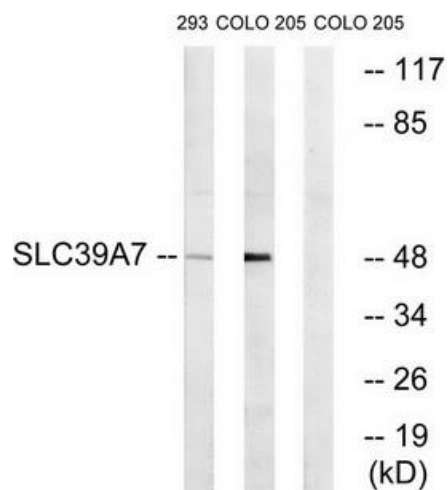
Product data:

Product Type:	Primary Antibodies
Applications:	WB
Recommended Dilution:	WB: 1:500~1:3000, ELISA: 1:5000
Reactivity:	Human, Mouse
Host:	Rabbit
Isotype:	IgG
Clonality:	Polyclonal
Immunogen:	The antiserum was produced against synthesized peptide derived from internal of human SLC39A7.
Formulation:	Phosphate buffered saline (without Mg ²⁺ and Ca ²⁺), pH 7.4, 150mM NaCl, 0.02% sodium azide and 50% glycerol.
Purification:	The antibody was affinity-purified from rabbit antiserum by affinity-chromatography using epitope-specific immunogen.
Conjugation:	Unconjugated
Storage:	Store at -20°C as received.
Stability:	Stable for 12 months from date of receipt.
Gene Name:	solute carrier family 39 member 7
Database Link:	NP_001070984 Entrez Gene 14977 Mouse Entrez Gene 7922 Human Q92504
Synonyms:	D6S115E; D6S2244E; H2-KE4; HKE4; KE4; RING5; ZIP7
Note:	SLC39A7 antibody detects endogenous levels of total SLC39A7 protein.
Protein Families:	Transmembrane



[View online »](#)

Product images:



Western blot analysis of extracts from 293 cells and COLO cells, using SLC39A7 antibody. The lane on the right is treated with the synthesized peptide.