

Product datasheet for **TA314705**

MAPKAP Kinase 3 (MAPKAPK3) Rabbit Polyclonal Antibody

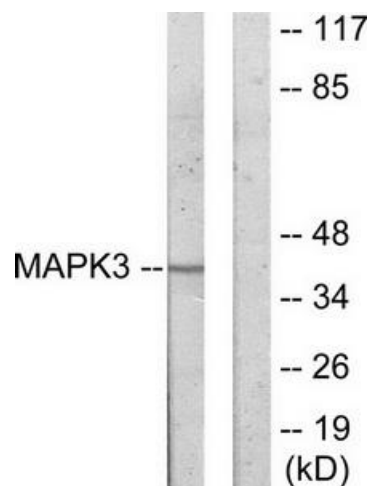
Product data:

Product Type:	Primary Antibodies
Applications:	IHC, WB
Recommended Dilution:	WB: 1:500~1:3000, IHC: 1:50~1:100, ELISA: 1:20000
Reactivity:	Human, Mouse, Rat
Host:	Rabbit
Isotype:	IgG
Clonality:	Polyclonal
Immunogen:	The antiserum was produced against synthesized peptide derived from internal of human MAPK3.
Formulation:	Phosphate buffered saline (without Mg ²⁺ and Ca ²⁺), pH 7.4, 150mM NaCl, 0.02% sodium azide and 50% glycerol.
Concentration:	lot specific
Purification:	The antibody was affinity-purified from rabbit antiserum by affinity-chromatography using epitope-specific immunogen.
Conjugation:	Unconjugated
Storage:	Store at -20°C as received.
Stability:	Stable for 12 months from date of receipt.
Gene Name:	mitogen-activated protein kinase-activated protein kinase 3
Database Link:	NP_001230854 Entrez Gene 102626 MouseEntrez Gene 315994 RatEntrez Gene 7867 Human Q16644
Synonyms:	3PK; MAPKAP-K3; MAPKAP3; MAPKAPK-3; MK-3
Note:	MAPK3 antibody detects endogenous levels of total MAPK3 protein.
Protein Families:	Druggable Genome, Protein Kinase
Protein Pathways:	MAPK signaling pathway, VEGF signaling pathway

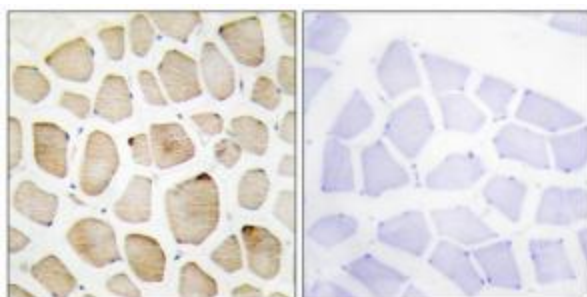


[View online »](#)

Product images:



Western blot analysis of extracts from COLO205 cells, using MAPK3 antibody. The lane on the right is treated with the synthesized peptide.



Immunohistochemistry analysis of paraffin-embedded human skeletal muscle tissue using MAPK3 antibody. The picture on the right is treated with the synthesized peptide.