

## Product datasheet for **TA314699**

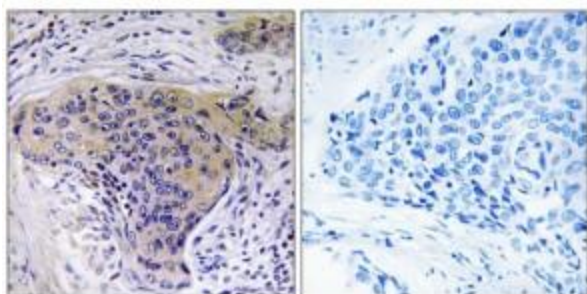
### SLC30A2 Rabbit Polyclonal Antibody

#### Product data:

Product Type:	Primary Antibodies
Applications:	IHC
Recommended Dilution:	IHC: 1:50~1:100, ELISA: 1:5000
Reactivity:	Human
Host:	Rabbit
Isotype:	IgG
Clonality:	Polyclonal
Immunogen:	The antiserum was produced against synthesized peptide derived from internal of human SLC30A2.
Formulation:	Phosphate buffered saline (without Mg <sup>2+</sup> and Ca <sup>2+</sup> ), pH 7.4, 150mM NaCl, 0.02% sodium azide and 50% glycerol.
Concentration:	lot specific
Purification:	The antibody was affinity-purified from rabbit antiserum by affinity-chromatography using epitope-specific immunogen.
Conjugation:	Unconjugated
Storage:	Store at -20°C as received.
Stability:	Stable for 12 months from date of receipt.
Gene Name:	solute carrier family 30 member 2
Database Link:	<a href="#">NP_115902</a> <a href="#">Entrez Gene 7780 Human</a> <a href="#">Q9BRI3</a>
Synonyms:	PP12488; TNZD; ZnT-2; ZNT2
Note:	SLC30A2 antibody detects endogenous levels of total SLC30A2 protein.
Protein Families:	Transmembrane



[View online »](#)

**Product images:**

Peptide

-

+

Immunohistochemistry analysis of paraffin-embedded human lung carcinoma tissue using SLC30A2 antibody. The picture on the right is treated with the synthesized peptide.