

Product datasheet for **TA314696**

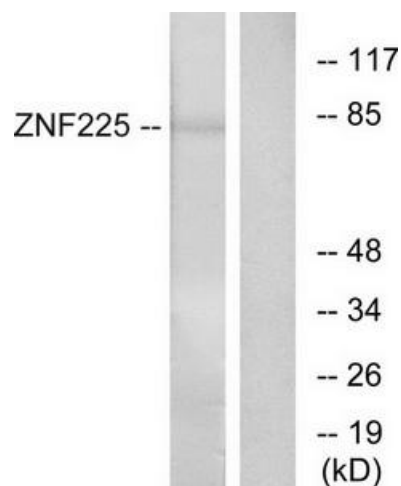
ZNF225 Rabbit Polyclonal Antibody

Product data:

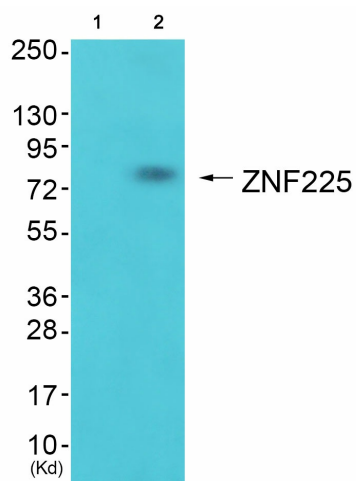
| | |
|-----------------------|--|
| Product Type: | Primary Antibodies |
| Applications: | WB |
| Recommended Dilution: | WB: 1:500~1:3000, ELISA: 1:20000 |
| Reactivity: | Human |
| Host: | Rabbit |
| Isotype: | IgG |
| Clonality: | Polyclonal |
| Immunogen: | The antiserum was produced against synthesized peptide derived from C-terminal of human ZNF225. |
| Formulation: | Phosphate buffered saline (without Mg ²⁺ and Ca ²⁺), pH 7.4, 150mM NaCl, 0.02% sodium azide and 50% glycerol. |
| Concentration: | lot specific |
| Purification: | The antibody was affinity-purified from rabbit antiserum by affinity-chromatography using epitope-specific immunogen. |
| Conjugation: | Unconjugated |
| Storage: | Store at -20°C as received. |
| Stability: | Stable for 12 months from date of receipt. |
| Gene Name: | zinc finger protein 225 |
| Database Link: | NP_037494 Entrez Gene 7768 Human Q9UK10 |
| Synonyms: | MGC119735 |
| Note: | ZNF225 antibody detects endogenous levels of total ZNF225 protein. |
| Protein Families: | Transcription Factors |

[View online »](#)

Product images:



Western blot analysis of extracts from HeLa cells, using ZNF225 antibody. The lane on the right is treated with the synthesized peptide.



Western blot analysis of extracts from 3T3 cells (Lane 2), using ZNF225 Antibody. The lane on the left is treated with synthesized peptide.