

Product datasheet for **TA314695**

ZNF187 (ZSCAN26) Rabbit Polyclonal Antibody

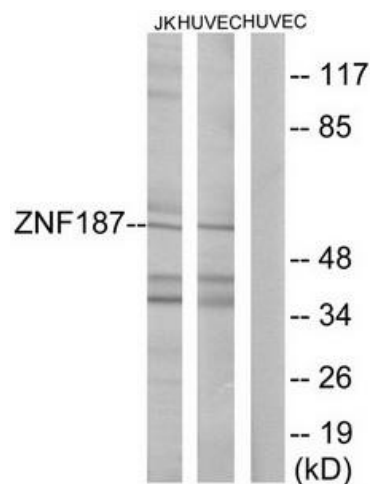
Product data:

Product Type:	Primary Antibodies
Applications:	IF, WB
Recommended Dilution:	WB: 1:500~1:3000, IF: 1:100~1:500, ELISA: 1:5000
Reactivity:	Human
Host:	Rabbit
Isotype:	IgG
Clonality:	Polyclonal
Immunogen:	The antiserum was produced against synthesized peptide derived from internal of human ZNF187.
Formulation:	Phosphate buffered saline (without Mg ²⁺ and Ca ²⁺), pH 7.4, 150mM NaCl, 0.02% sodium azide and 50% glycerol.
Concentration:	lot specific
Purification:	The antibody was affinity-purified from rabbit antiserum by affinity-chromatography using epitope-specific immunogen.
Conjugation:	Unconjugated
Storage:	Store at -20°C as received.
Stability:	Stable for 12 months from date of receipt.
Gene Name:	zinc finger and SCAN domain containing 26
Database Link:	NP_001018854 Entrez Gene 7741 Human Q16670
Synonyms:	SRE-ZBP; ZNF187
Note:	ZNF187 antibody detects endogenous levels of total ZNF187 protein.
Protein Families:	Transcription Factors

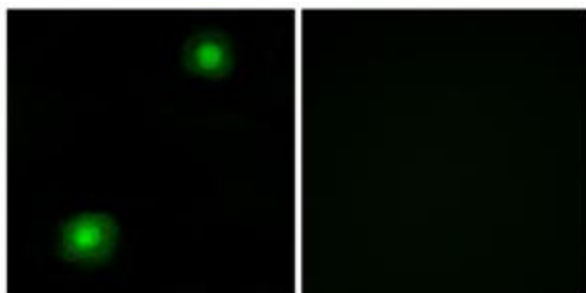


[View online »](#)

Product images:



Western blot analysis of extracts from Jurkat cells and HUVEC cells, using ZNF187 antibody. The lane on the right is treated with the synthesized peptide.



Immunofluorescence analysis of A549 cells, using ZNF187 antibody. The picture on the right is treated with the synthesized peptide.