

Product datasheet for **TA314694**

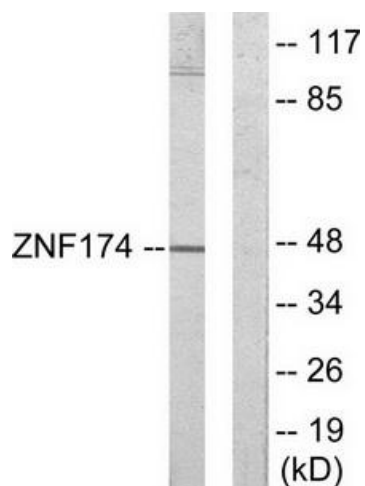
ZNF174 Rabbit Polyclonal Antibody

Product data:

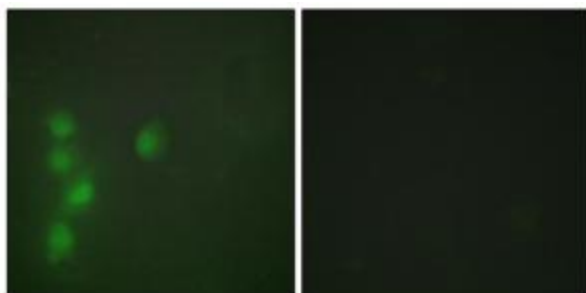
| | |
|-----------------------|--|
| Product Type: | Primary Antibodies |
| Applications: | IF, WB |
| Recommended Dilution: | WB: 1:500~1:3000, IF: 1:100~1:500, ELISA: 1:5000 |
| Reactivity: | Human |
| Host: | Rabbit |
| Isotype: | IgG |
| Clonality: | Polyclonal |
| Immunogen: | The antiserum was produced against synthesized peptide derived from internal of human ZNF174. |
| Formulation: | Phosphate buffered saline (without Mg ²⁺ and Ca ²⁺), pH 7.4, 150mM NaCl, 0.02% sodium azide and 50% glycerol. |
| Concentration: | lot specific |
| Purification: | The antibody was affinity-purified from rabbit antiserum by affinity-chromatography using epitope-specific immunogen. |
| Conjugation: | Unconjugated |
| Storage: | Store at -20°C as received. |
| Stability: | Stable for 12 months from date of receipt. |
| Gene Name: | zinc finger protein 174 |
| Database Link: | NP_001027463 Entrez Gene 7727 Human Q15697 |
| Synonyms: | ZSCAN8 |
| Note: | ZNF174 antibody detects endogenous levels of total ZNF174 protein. |
| Protein Families: | Transcription Factors |



[View online »](#)

Product images:

Western blot analysis of extracts from HeLa cells, using ZNF174 antibody. The lane on the right is treated with the synthesized peptide.



Immunofluorescence analysis of HUVEC cells, using ZNF174 antibody. The picture on the right is treated with the synthesized peptide.