

Product datasheet for **TA314693**

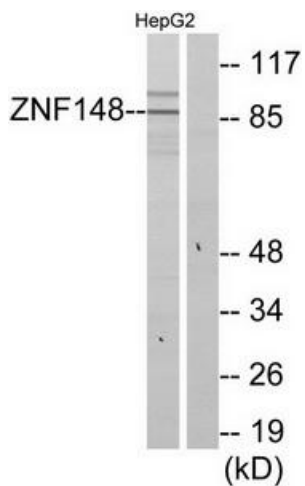
ZNF148 Rabbit Polyclonal Antibody

Product data:

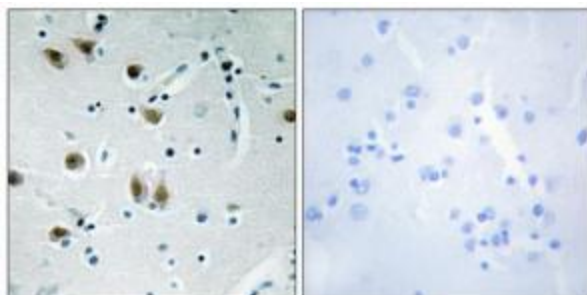
Product Type:	Primary Antibodies
Applications:	IHC, WB
Recommended Dilution:	WB: 1:500~1:3000, IHC: 1:50~1:100, ELISA: 1:1000
Reactivity:	Human, Mouse, Rat
Host:	Rabbit
Isotype:	IgG
Clonality:	Polyclonal
Immunogen:	The antiserum was produced against synthesized peptide derived from internal of human ZNF148.
Formulation:	Phosphate buffered saline (without Mg ²⁺ and Ca ²⁺), pH 7.4, 150mM NaCl, 0.02% sodium azide and 50% glycerol.
Concentration:	lot specific
Purification:	The antibody was affinity-purified from rabbit antiserum by affinity-chromatography using epitope-specific immunogen.
Conjugation:	Unconjugated
Storage:	Store at -20°C as received.
Stability:	Stable for 12 months from date of receipt.
Gene Name:	zinc finger protein 148
Database Link:	NP_068799 Entrez Gene 7707 Human Q9UQR1
Synonyms:	BERF-1; BFCOL1; HT-BETA; pHZ-52; ZBP-89; ZFP148
Note:	ZNF148 antibody detects endogenous levels of total ZNF148 protein.
Protein Families:	Transcription Factors



[View online »](#)

Product images:

Western blot analysis of extracts from HepG2 cells, using ZNF148 antibody. The lane on the right is treated with the synthesized peptide.



Immunohistochemistry analysis of paraffin-embedded human brain tissue using ZNF148 antibody. The picture on the right is treated with the synthesized peptide.