

## Product datasheet for **TA314691**

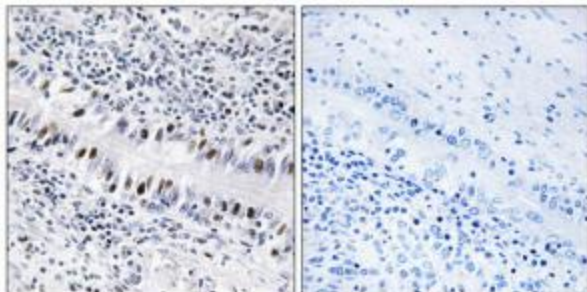
### ZNF76 Rabbit Polyclonal Antibody

#### Product data:

Product Type:	Primary Antibodies
Applications:	IHC
Recommended Dilution:	IHC: 1:50~1:100, ELISA: 1:10000
Reactivity:	Human
Host:	Rabbit
Isotype:	IgG
Clonality:	Polyclonal
Immunogen:	The antiserum was produced against synthesized peptide derived from internal of human ZNF76.
Formulation:	Phosphate buffered saline (without Mg <sup>2+</sup> and Ca <sup>2+</sup> ), pH 7.4, 150mM NaCl, 0.02% sodium azide and 50% glycerol.
Concentration:	lot specific
Purification:	The antibody was affinity-purified from rabbit antiserum by affinity-chromatography using epitope-specific immunogen.
Conjugation:	Unconjugated
Storage:	Store at -20°C as received.
Stability:	Stable for 12 months from date of receipt.
Gene Name:	zinc finger protein 76
Database Link:	<a href="#">NP_003418</a> <a href="#">Entrez Gene 7629 Human</a> <a href="#">P36508</a>
Synonyms:	D6S229E; Zfp523; ZNF523
Note:	ZNF76 antibody detects endogenous levels of total ZNF76 protein.
Protein Families:	Transcription Factors



[View online »](#)

**Product images:**

Immunohistochemistry analysis of paraffin-embedded human lung carcinoma tissue, using ZNF76 antibody. The picture on the right is treated with the synthesized peptide.