

Product datasheet for **TA314682**

splicing factor 1 (SF1) Rabbit Polyclonal Antibody

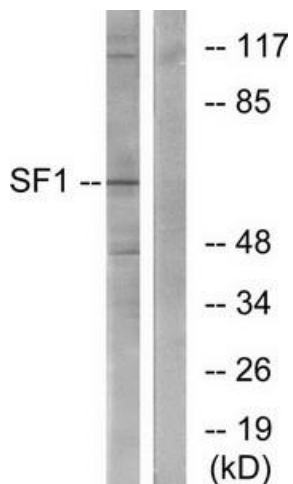
Product data:

Product Type:	Primary Antibodies
Applications:	IF, IHC, WB
Recommended Dilution:	WB: 1:500~1:3000, IHC: 1:50~1:100, IF: 1:100~1:500, ELISA: 1:20000
Reactivity:	Human, Mouse
Host:	Rabbit
Isotype:	IgG
Clonality:	Polyclonal
Immunogen:	The antiserum was produced against synthesized non-phosphopeptide derived from human SF1 around the phosphorylation site of serine 82 (S-P-SP-P-E).
Formulation:	Phosphate buffered saline (without Mg ²⁺ and Ca ²⁺), pH 7.4, 150mM NaCl, 0.02% sodium azide and 50% glycerol.
Concentration:	lot specific
Purification:	The antibody was affinity-purified from rabbit antiserum by affinity-chromatography using epitope-specific immunogen.
Conjugation:	Unconjugated
Storage:	Store at -20°C as received.
Stability:	Stable for 12 months from date of receipt.
Gene Name:	splicing factor 1
Database Link:	NP_001171501 Entrez Gene 22668 Mouse Entrez Gene 7536 Human Q15637
Synonyms:	BBP; D11S636; MBBP; ZCCHC25; ZFM1; ZNF162
Note:	SF1 (Ab-82) antibody detects endogenous levels of total SF1 protein.
Protein Families:	Transcription Factors

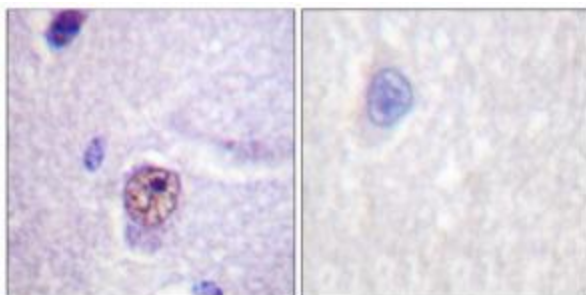


[View online »](#)

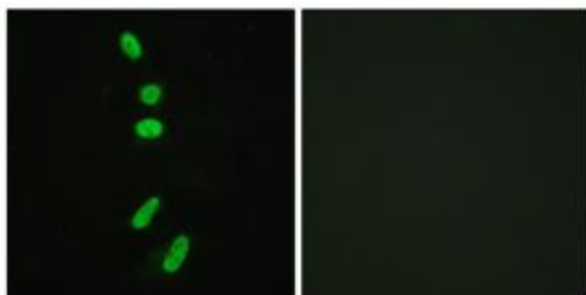
Product images:



Western blot analysis of extracts from COLO205 cells, using SF1 (Ab-82) antibody. The lane on the right is treated with the synthesized peptide.



Immunohistochemistry analysis of paraffin-embedded human brain tissue using SF1 (Ab-82) antibody. The picture on the right is treated with the synthesized peptide.



Immunofluorescence analysis of HeLa cells, using SF1 (Ab-82) antibody. The picture on the right is treated with the synthesized peptide.