

Product datasheet for **TA314679**

14-3-3 zeta (YWHAZ) Rabbit Polyclonal Antibody

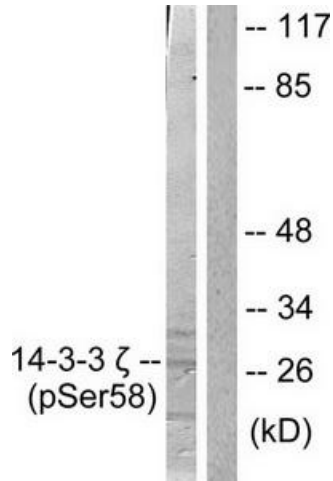
Product data:

Product Type:	Primary Antibodies
Applications:	IF, IHC, WB
Recommended Dilution:	WB: 1:500~1000, IHC: 1:50~100, IF: 1:100~1:500, ELISA: 1:40000
Reactivity:	Human, Mouse, Rat
Modifications:	Phospho-specific
Host:	Rabbit
Isotype:	IgG
Clonality:	Polyclonal
Immunogen:	The antiserum was produced against synthesized phosphopeptide derived from human 14-3-3 ? around the phosphorylation site of serine 58 (R-S-SP-W-R)
Formulation:	Phosphate buffered saline (without Mg ²⁺ and Ca ²⁺), pH 7.4, 150mM NaCl, 0.02% sodium azide and 50% glycerol.
Concentration:	lot specific
Purification:	The antibody was affinity-purified from rabbit antiserum by affinity-chromatography using epitope-specific immunogen.
Conjugation:	Unconjugated
Storage:	Store at -20°C as received.
Stability:	Stable for 12 months from date of receipt.
Gene Name:	tyrosine 3-monooxygenase/tryptophan 5-monooxygenase activation protein zeta
Database Link:	NP_663723 Entrez Gene 22631 Mouse Entrez Gene 25578 Rat Entrez Gene 7534 Human P63104
Synonyms:	14-3-3-zeta; HEL-S-3; HEL4; KCIP-1; YWHAD
Note:	14-3-3 . (phospho-Ser58) antibody detects endogenous levels of 14-3-3 . only when phosphorylated at serine 58.
Protein Pathways:	Cell cycle, Neurotrophin signaling pathway, Oocyte meiosis, Pathogenic Escherichia coli infection

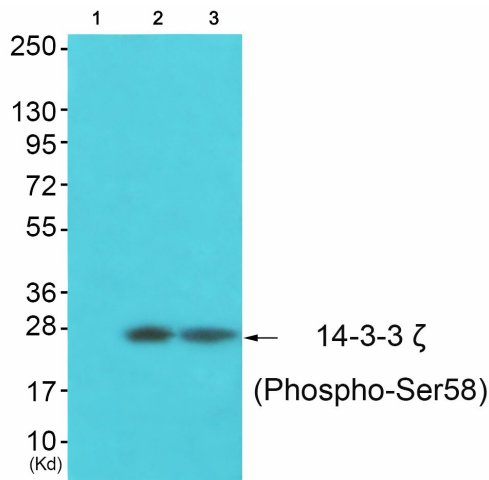


[View online »](#)

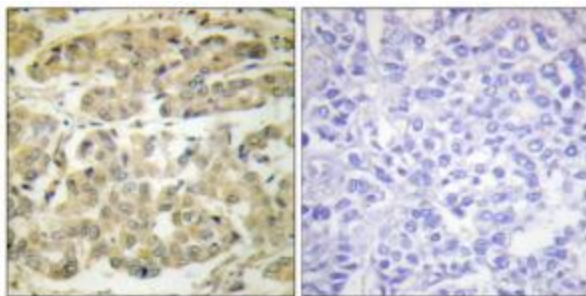
Product images:



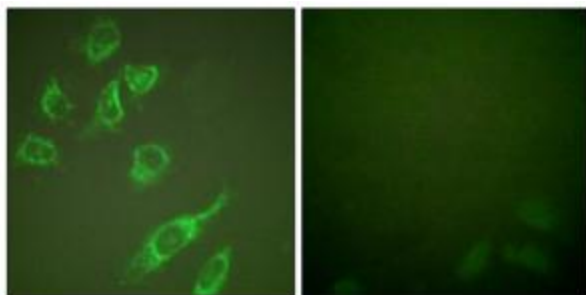
Western blot analysis of extracts from NIH/3T3 cells treated with UV (30mins), using 14-3-3 zeta (phospho-Ser58) antibody. The lane on the right is treated with the synthesized peptide.



Western blot analysis of extracts from A549 cells (Lane 2) and 3T3 cells (Lane 3), using 14-3-3 zeta (Phospho-Ser58) Antibody. The lane on the left is treated with synthesized peptide.



Immunohistochemical analysis of paraffin-embedded human breast carcinoma tissue using 14-3-3 zeta (phospho-Ser58) antibody. The picture on the right is treated with the synthesized peptide.



Immunofluorescence analysis of HeLa cells, treated with PMA (125ng/ml, 30mins), using 14-3-3 ? (phospho-Ser58) antibody. The picture on the right is treated with the synthesized peptide.