

## Product datasheet for **TA314676**

### 14 3 3 eta (YWHAH) Rabbit Polyclonal Antibody

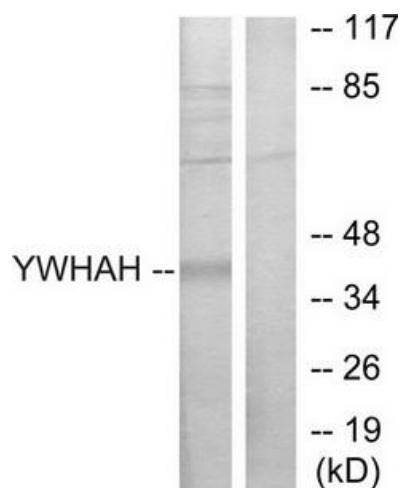
#### Product data:

Product Type:	Primary Antibodies
Applications:	IF, WB
Recommended Dilution:	WB: 1:500~1:3000, IF: 1:100~1:500, ELISA: 1:5000
Reactivity:	Human, Mouse, Rat
Host:	Rabbit
Isotype:	IgG
Clonality:	Polyclonal
Immunogen:	The antiserum was produced against synthesized peptide derived from internal of human 14-3-3 ?.
Formulation:	Phosphate buffered saline (without Mg <sup>2+</sup> and Ca <sup>2+</sup> ), pH 7.4, 150mM NaCl, 0.02% sodium azide and 50% glycerol.
Concentration:	lot specific
Purification:	The antibody was affinity-purified from rabbit antiserum by affinity-chromatography using epitope-specific immunogen.
Conjugation:	Unconjugated
Storage:	Store at -20°C as received.
Stability:	Stable for 12 months from date of receipt.
Gene Name:	tyrosine 3-monooxygenase/tryptophan 5-monooxygenase activation protein eta
Database Link:	<a href="#">NP_003396</a> <a href="#">Entrez Gene 22629 Mouse</a> <a href="#">Entrez Gene 25576 Rat</a> <a href="#">Entrez Gene 7533 Human</a> <a href="#">Q04917</a>
Synonyms:	YWHA1
Note:	14-3-3 . antibody detects endogenous levels of total 14-3-3 . protein.
Protein Families:	Druggable Genome, Transcription Factors
Protein Pathways:	Cell cycle, Neurotrophin signaling pathway, Oocyte meiosis

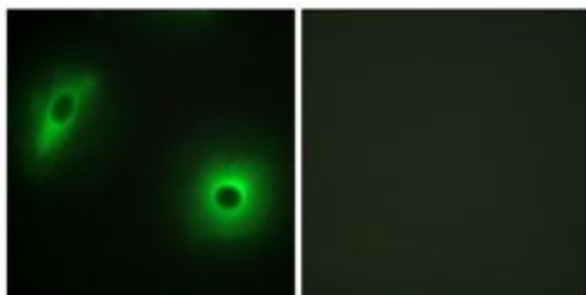


[View online »](#)

## Product images:



Western blot analysis of extracts from Jurkat cells, using 14-3-3 $\eta$  antibody. The lane on the right is treated with the synthesized peptide.



Immunofluorescence analysis of HeLa cells, using 14-3-3 $\eta$  antibody. The picture on the right is treated with the synthesized peptide.