

Product datasheet for **TA314675**

XPA Rabbit Polyclonal Antibody

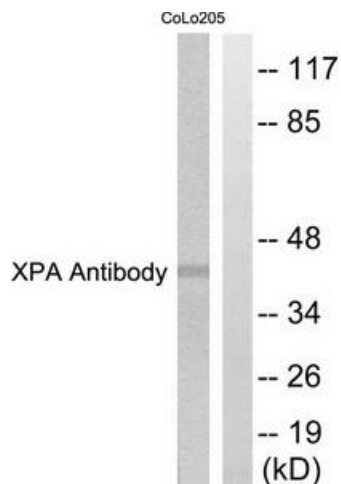
Product data:

Product Type:	Primary Antibodies
Applications:	IHC, WB
Recommended Dilution:	WB: 1:500~1:3000, IHC: 1:50~1:100, ELISA: 1:5000
Reactivity:	Human, Mouse
Host:	Rabbit
Isotype:	IgG
Clonality:	Polyclonal
Immunogen:	The antiserum was produced against synthesized peptide derived from Internal of human XPA.
Formulation:	Phosphate buffered saline (without Mg ²⁺ and Ca ²⁺), pH 7.4, 150mM NaCl, 0.02% sodium azide and 50% glycerol.
Concentration:	lot specific
Purification:	The antibody was affinity-purified from rabbit antiserum by affinity-chromatography using epitope-specific immunogen.
Conjugation:	Unconjugated
Storage:	Store at -20°C as received.
Stability:	Stable for 12 months from date of receipt.
Gene Name:	XPA, DNA damage recognition and repair factor
Database Link:	NP_000371 Entrez Gene 22590 Mouse Entrez Gene 7507 Human P23025
Synonyms:	XP1; XPAC
Note:	XPA antibody detects endogenous levels of total XPA protein.
Protein Families:	Druggable Genome
Protein Pathways:	Nucleotide excision repair

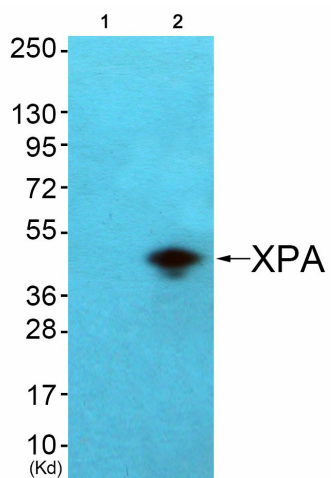


[View online »](#)

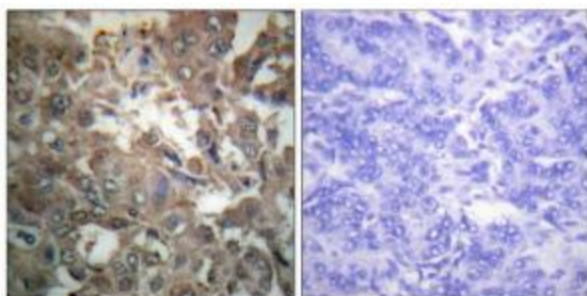
Product images:



Western blot analysis of extracts from COLO205 cells, using XPA antibody. The lane on the right is treated with the synthesized peptide.



Western blot analysis of extracts from COS7 cells (Lane 2), using XPA Antibody. The lane on the left is treated with synthesized peptide.



Immunohistochemistry analysis of paraffin-embedded human breast carcinoma tissue using XPA antibody. The picture on the right is treated with the synthesized peptide.