

Product datasheet for **TA314672**

WEE1 Rabbit Polyclonal Antibody

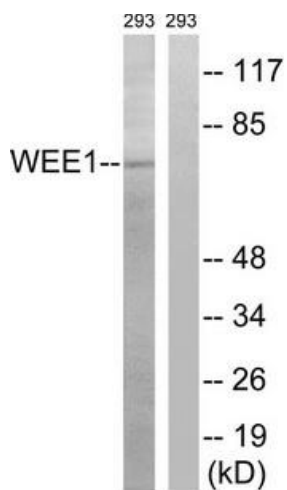
Product data:

Product Type:	Primary Antibodies
Applications:	WB
Recommended Dilution:	WB: 1:500~1:3000, ELISA: 1:40000
Reactivity:	Human, Mouse, Rat
Host:	Rabbit
Isotype:	IgG
Clonality:	Polyclonal
Immunogen:	The antiserum was produced against synthesized non-phosphopeptide derived from human WEE1 around the phosphorylation site of serine 53 (E-D-SP-A-F).
Formulation:	Phosphate buffered saline (without Mg ²⁺ and Ca ²⁺), pH 7.4, 150mM NaCl, 0.02% sodium azide and 50% glycerol.
Concentration:	lot specific
Purification:	The antibody was affinity-purified from rabbit antiserum by affinity-chromatography using epitope-specific immunogen.
Conjugation:	Unconjugated
Storage:	Store at -20°C as received.
Stability:	Stable for 12 months from date of receipt.
Gene Name:	WEE1 G2 checkpoint kinase
Database Link:	NP_001137448 Entrez Gene 22390 Mouse Entrez Gene 308937 Rat Entrez Gene 7465 Human P30291
Synonyms:	WEE1A; WEE1hu
Note:	WEE1 (Ab-53) antibody detects endogenous levels of total WEE1 protein.
Protein Families:	Druggable Genome, Protein Kinase, Stem cell - Pluripotency
Protein Pathways:	Cell cycle



[View online »](#)

Product images:



Western blot analysis of extracts from 293 cells, using WEE1 (Ab-53) antibody. The lane on the right is treated with the synthesized peptide.