

Product datasheet for **TA314671**

CYLN2 (CLIP2) Rabbit Polyclonal Antibody

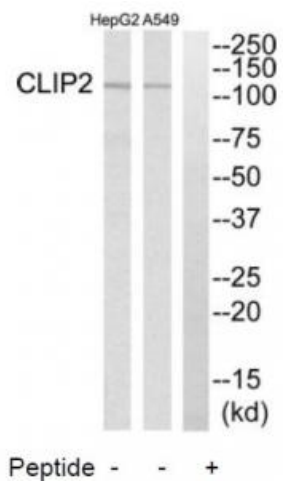
Product data:

Product Type:	Primary Antibodies
Applications:	WB
Recommended Dilution:	WB: 1:500~1:3000, ELISA: 1:40000
Reactivity:	Human, Mouse, Rat
Host:	Rabbit
Isotype:	IgG
Clonality:	Polyclonal
Immunogen:	The antiserum was produced against synthesized peptide derived from C-terminal of human CLIP2.
Formulation:	Phosphate buffered saline (without Mg ²⁺ and Ca ²⁺), pH 7.4, 150mM NaCl, 0.02% sodium azide and 50% glycerol.
Purification:	The antibody was affinity-purified from rabbit antiserum by affinity-chromatography using epitope-specific immunogen.
Conjugation:	Unconjugated
Storage:	Store at -20°C as received.
Stability:	Stable for 12 months from date of receipt.
Gene Name:	CAP-Gly domain containing linker protein 2
Database Link:	NP_003379 Entrez Gene 29264 Rat Entrez Gene 269713 Mouse Entrez Gene 7461 Human Q9UDT6
Synonyms:	CLIP; CLIP-115; CYLN2; WBSCR3; WBSCR4; WSCR3; WSCR4
Note:	CLIP2 antibody detects endogenous levels of total CLIP2 protein.



[View online »](#)

Product images:



Western blot analysis of extracts from HepG2 cells and A549 cells, using CLIP2 antibody. The lane on the right is treated with the synthesized peptide.