

Product datasheet for **TA314669**

VIP Receptor 1 (VIPR1) Rabbit Polyclonal Antibody

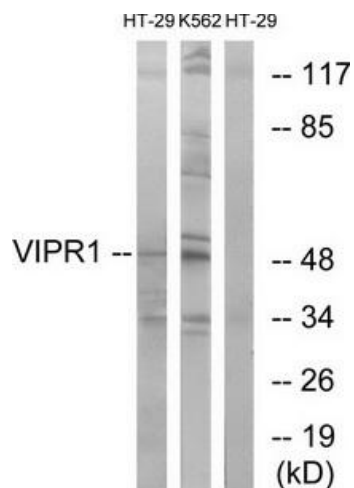
Product data:

Product Type:	Primary Antibodies
Applications:	IF, WB
Recommended Dilution:	WB: 1:500~1:3000, IF: 1:100~1:500, ELISA: 1:10000
Reactivity:	Human, Mouse, Rat
Host:	Rabbit
Isotype:	IgG
Clonality:	Polyclonal
Immunogen:	The antiserum was produced against synthesized peptide derived from interf human VIPR1.
Formulation:	Phosphate buffered saline (without Mg ²⁺ and Ca ²⁺), pH 7.4, 150mM NaCl, 0.02% sodium azide and 50% glycerol.
Concentration:	lot specific
Purification:	The antibody was affinity-purified from rabbit antiserum by affinity-chromatography using epitope-specific immunogen.
Conjugation:	Unconjugated
Storage:	Store at -20°C as received.
Stability:	Stable for 12 months from date of receipt.
Gene Name:	vasoactive intestinal peptide receptor 1
Database Link:	NP_004615 Entrez Gene 22354 Mouse Entrez Gene 24875 Rat Entrez Gene 7433 Human P32241
Synonyms:	HVR1; II; PACAP-R-2; PACAP-R2; RDC1; V1RG; VAPC1; VIP-R-1; VIPR; VIRG; VPAC1; VPAC1R; VPCAP1R
Note:	VIPR1 antibody detects endogenous levels of total VIPR1 protein.
Protein Families:	Druggable Genome, GPCR, Transmembrane
Protein Pathways:	Neuroactive ligand-receptor interaction

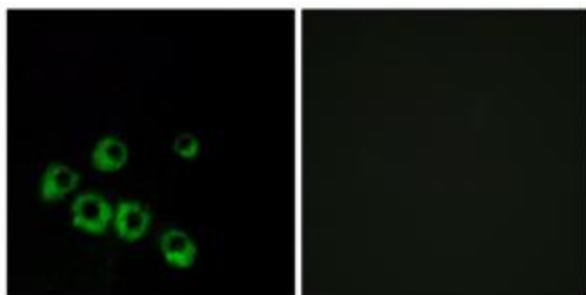


[View online »](#)

Product images:



Western blot analysis of extracts from HT-29 cells and K562 cells, using VIPR1 antibody. The lane on the right is treated with the synthesized peptide.



Immunofluorescence analysis of MCF-7 cells, using VIPR1 antibody. The picture on the right is treated with the synthesized peptide.