

Product datasheet for **TA314667**

VEGFB Rabbit Polyclonal Antibody

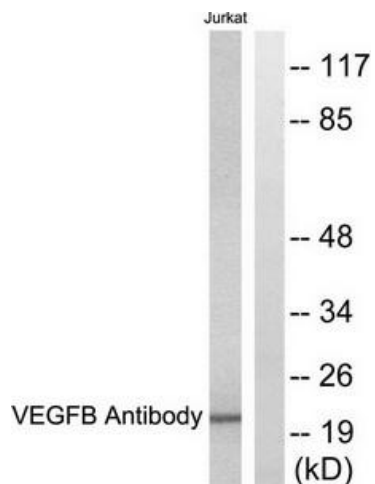
Product data:

Product Type:	Primary Antibodies
Applications:	WB
Recommended Dilution:	WB: 1:500~1:3000, ELISA: 1:20000
Reactivity:	Human, Mouse, Rat
Host:	Rabbit
Isotype:	IgG
Clonality:	Polyclonal
Immunogen:	The antiserum was produced against synthesized peptide derived from Internal of human VEGFB.
Formulation:	Phosphate buffered saline (without Mg ²⁺ and Ca ²⁺), pH 7.4, 150mM NaCl, 0.02% sodium azide and 50% glycerol.
Concentration:	lot specific
Purification:	The antibody was affinity-purified from rabbit antiserum by affinity-chromatography using epitope-specific immunogen.
Conjugation:	Unconjugated
Storage:	Store at -20°C as received.
Stability:	Stable for 12 months from date of receipt.
Gene Name:	vascular endothelial growth factor B
Database Link:	NP_001230662 Entrez Gene 22340 MouseEntrez Gene 89811 RatEntrez Gene 7423 Human P49765
Synonyms:	VEGFL; VRF
Note:	VEGFB antibody detects endogenous levels of total VEGFB protein.
Protein Families:	Druggable Genome, Secreted Protein
Protein Pathways:	Bladder cancer, Cytokine-cytokine receptor interaction, Focal adhesion, mTOR signaling pathway, Pancreatic cancer, Pathways in cancer, Renal cell carcinoma

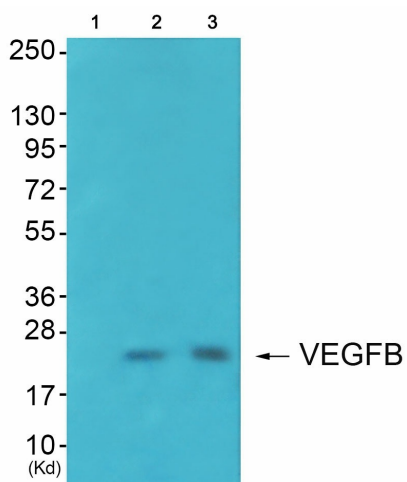


[View online »](#)

Product images:



Western blot analysis of extracts from Jurkat cells, using VEGFB antibody. The lane on the right is treated with the synthesized peptide.



Western blot analysis of extracts from K562 cells (Lane 2) and 293 cells (Lane 3), using VEGFB Antibody. The lane on the left is treated with synthesized peptide.