

Product datasheet for **TA314665**

USF2 Rabbit Polyclonal Antibody

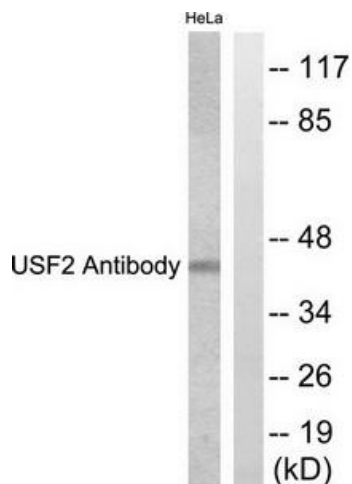
Product data:

Product Type:	Primary Antibodies
Applications:	IHC, WB
Recommended Dilution:	WB: 1:500~1:3000, IHC: 1:50~1:100, ELISA: 1:20000
Reactivity:	Human, Mouse, Rat
Host:	Rabbit
Isotype:	IgG
Clonality:	Polyclonal
Immunogen:	The antiserum was produced against synthesized peptide derived from Internal of human USF-2.
Formulation:	Phosphate buffered saline (without Mg ²⁺ and Ca ²⁺), pH 7.4, 150mM NaCl, 0.02% sodium azide and 50% glycerol.
Concentration:	lot specific
Purification:	The antibody was affinity-purified from rabbit antiserum by affinity-chromatography using epitope-specific immunogen.
Conjugation:	Unconjugated
Storage:	Store at -20°C as received.
Stability:	Stable for 12 months from date of receipt.
Gene Name:	upstream transcription factor 2, c-fos interacting
Database Link:	NP_003358 Entrez Gene 22282 MouseEntrez Gene 81817 RatEntrez Gene 7392 Human Q15853
Synonyms:	bHLHb12; FIP
Note:	USF2 antibody detects endogenous levels of total USF-2 protein.
Protein Families:	Druggable Genome, Transcription Factors

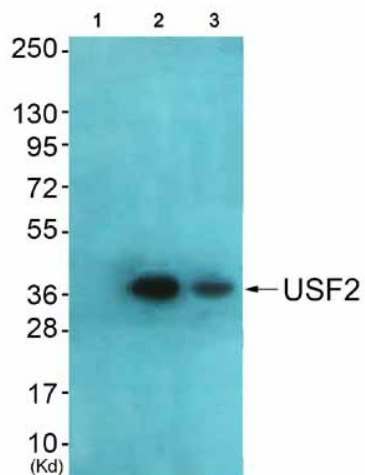


[View online »](#)

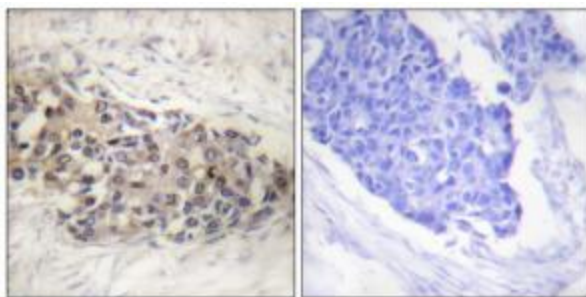
Product images:



Western blot analysis of extracts from HeLa cells, using USF2 antibody. The lane on the right is treated with the synthesized peptide.



Western blot analysis of extracts from HeLa cells (Lane 2) and HepG2 cells (Lane 3), using USF2 Antibody. The lane on the left is treated with synthesized peptide.



Immunohistochemistry analysis of paraffin-embedded human breast carcinoma tissue using USF2 antibody. The picture on the right is treated with the synthesized peptide.