

Product datasheet for **TA314664**

COL14A1 Rabbit Polyclonal Antibody

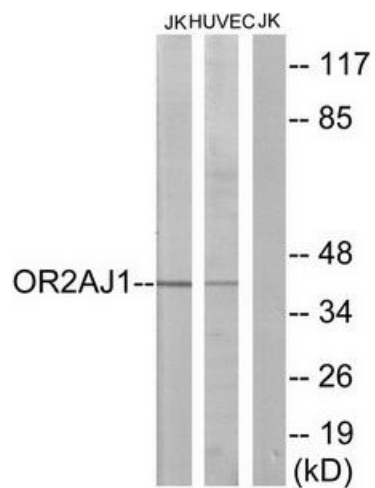
Product data:

Product Type:	Primary Antibodies
Applications:	WB
Recommended Dilution:	WB: 1:500~1:3000, ELISA: 1:1000
Reactivity:	Human
Host:	Rabbit
Isotype:	IgG
Clonality:	Polyclonal
Immunogen:	The antiserum was produced against synthesized peptide derived from internal of human OR2AJ1.
Formulation:	Phosphate buffered saline (without Mg ²⁺ and Ca ²⁺), pH 7.4, 150mM NaCl, 0.02% sodium azide and 50% glycerol.
Concentration:	lot specific
Purification:	The antibody was affinity-purified from rabbit antiserum by affinity-chromatography using epitope-specific immunogen.
Conjugation:	Unconjugated
Storage:	Store at -20°C as received.
Stability:	Stable for 12 months from date of receipt.
Gene Name:	collagen type XIV alpha 1 chain
Database Link:	NP_066933 Entrez Gene 7373 Human Q05707
Synonyms:	UND
Note:	OR2AJ1 antibody detects endogenous levels of total OR2AJ1 protein.
Protein Families:	Transmembrane



[View online »](#)

Product images:



Western blot analysis of extracts from Jurkat cells and HUVEC cells, using OR2AJ1 antibody. The lane on the right is treated with the synthesized peptide.