

Product datasheet for **TA314663**

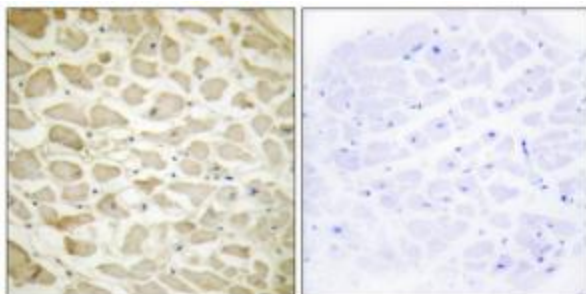
COL14A1 Rabbit Polyclonal Antibody

Product data:

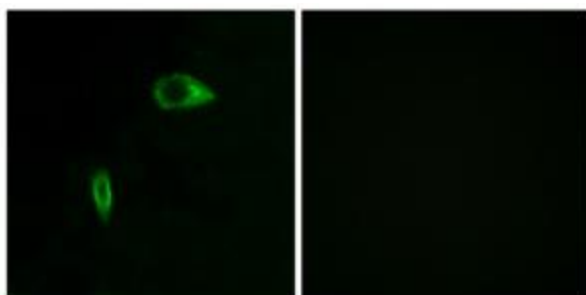
Product Type:	Primary Antibodies
Applications:	IF, IHC
Recommended Dilution:	IHC: 1:50~1:100, IF: 1:100~1:500, ELISA: 1:40000
Reactivity:	Human, Mouse
Host:	Rabbit
Isotype:	IgG
Clonality:	Polyclonal
Immunogen:	The antiserum was produced against synthesized peptide derived from internal of human Collagen XIV a1.
Formulation:	Phosphate buffered saline (without Mg ²⁺ and Ca ²⁺), pH 7.4, 150mM NaCl, 0.02% sodium azide and 50% glycerol.
Concentration:	lot specific
Purification:	The antibody was affinity-purified from rabbit antiserum by affinity-chromatography using epitope-specific immunogen.
Conjugation:	Unconjugated
Storage:	Store at -20°C as received.
Stability:	Stable for 12 months from date of receipt.
Gene Name:	collagen type XIV alpha 1 chain
Database Link:	NP_066933 Entrez Gene 12818 Mouse Entrez Gene 7373 Human Q05707
Synonyms:	UND
Note:	Collagen XIV .1 antibody detects endogenous levels of total Collagen XIV .1 protein.
Protein Families:	Transmembrane



[View online »](#)

Product images:


Immunohistochemistry analysis of paraffin-embedded human heart tissue using Collagen XIV a1 antibody. The picture on the right is treated with the synthesized peptide.



Immunofluorescence analysis of HeLa cells, using Collagen XIV a1 antibody. The picture on the right is treated with the synthesized peptide.