

Product datasheet for **TA314662**

UDP glucose dehydrogenase (UGDH) Rabbit Polyclonal Antibody

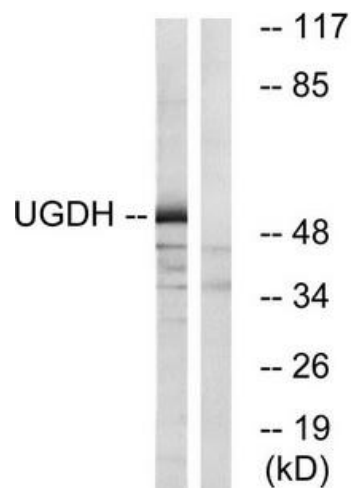
Product data:

Product Type:	Primary Antibodies
Applications:	WB
Recommended Dilution:	WB: 1:500~1:3000, ELISA: 1:10000
Reactivity:	Human, Mouse, Rat
Host:	Rabbit
Isotype:	IgG
Clonality:	Polyclonal
Immunogen:	The antiserum was produced against synthesized peptide derived from internal of human UGDH.
Formulation:	Phosphate buffered saline (without Mg ²⁺ and Ca ²⁺), pH 7.4, 150mM NaCl, 0.02% sodium azide and 50% glycerol.
Concentration:	lot specific
Purification:	The antibody was affinity-purified from rabbit antiserum by affinity-chromatography using epitope-specific immunogen.
Conjugation:	Unconjugated
Storage:	Store at -20°C as received.
Stability:	Stable for 12 months from date of receipt.
Gene Name:	UDP-glucose 6-dehydrogenase
Database Link:	NP_001171629 Entrez Gene 22235 Mouse Entrez Gene 83472 Rat Entrez Gene 7358 Human O60701
Synonyms:	GDH; UDP-GlcDH; UDPGDH; UGD
Note:	UGDH antibody detects endogenous levels of total UGDH protein.
Protein Pathways:	Amino sugar and nucleotide sugar metabolism, Ascorbate and aldarate metabolism, Metabolic pathways, Pentose and glucuronate interconversions, Starch and sucrose metabolism



[View online »](#)

Product images:



Western blot analysis of extracts from COLO cells, using UGDH antibody. The lane on the right is treated with the synthesized peptide.